



## MCL100

### Excellent optical system performance

The MCL100 is a mini LED marine lantern, solar self-contained, which uses one only high-power LED, giving a nominal range up to 5 nautical miles. It is characterized by its excellent optical system performance, minimizing consumption and offering a large autonomy.

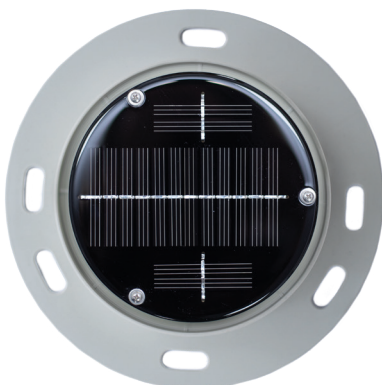
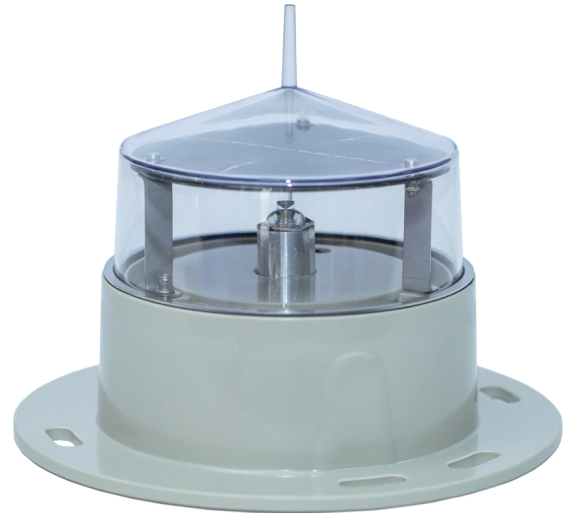
### Low consumption

Ideal for short-range beaconing applications, on- and off-shore, requiring a low consumption, such as jetties, piers, buoys, fish farms, etc.

### Replaceable battery

The battery is replaceable, thus the complete lantern disposal is not necessary at the end of battery's life. Standard fixings allow for a quick lantern replacement.

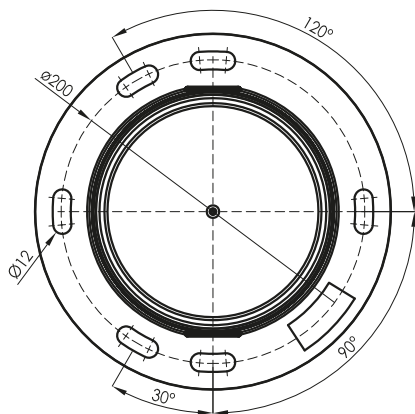
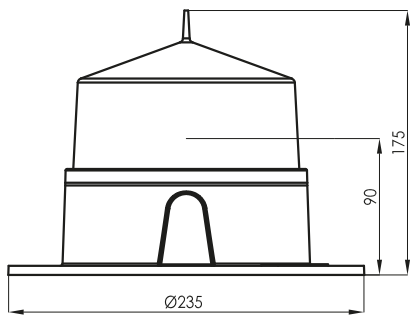
Designed according to IALA Recommendations.



## FEATURES

- *High-efficiency luminous system.*  
Up to 5 nm ( $T=0.74$ ), 6 nm ( $T=0.85$ ).
- *Vertical divergence up to 15° (50%  $I_0$ ).*
- *360° horizontal output.*
- *Average operation lifetime over 10 years.*
- *The battery can be easily replaced.*
- *IP 68 watertightness degree (immersion resistant).*
- *High shock resistance.*
- *Anti-humidity device in order to avoid condensation.*
- *Autonomy without solar charging up to 250 hours.*
- *Automatic energy management, according to solar radiation.*
- *Programming, configuration and operating status via PC or IR programmer.*
- *GPS synchronization module included as standard.*

# MCL100



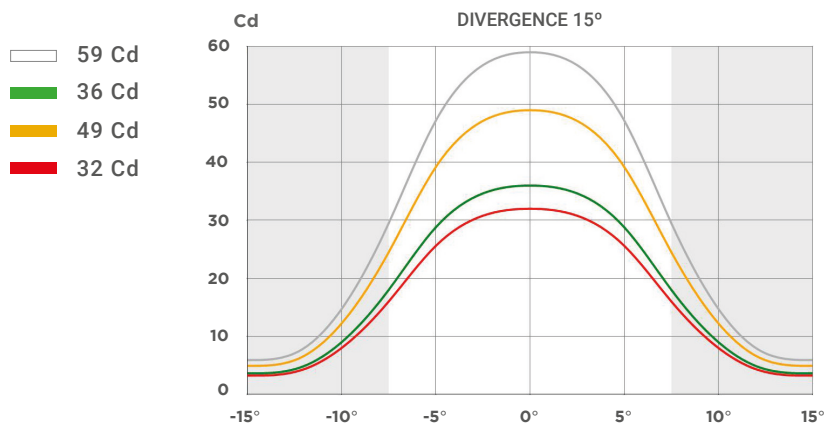
## Technical Features

<b>Light source:</b>	Ultra-bright LED diode, with high-precision acrylic lens.
<b>LED average life:</b>	More than 100,000 hours.
<b>Flash rhythms:</b>	256 rhythms (6 nos. user selectable).
<b>Solar module:</b>	1 no. of 1W.
<b>Battery:</b>	4.8 Ah, Lead Crystal®, maintenance-free.
<b>Base:</b>	Glass-fibre reinforced polyamide PA66-GF30.
<b>Lens cover:</b>	UV stabilized polycarbonate.
<b>Watertightness degree:</b>	IP 68.

## Options

- PC programming kit.
- Antivandal screws kit.
- Other specifications available under request.

## Peak intensities (Cd)



Specifications subject to change without previous notice.

Luminous ranges will be affected depending on latitude, flash rhythms and chosen options.



PC



IR



GPS

OPTIONAL

## MCL120

### Excellent optical system performance

The MCL120 is a mini LED marine lantern, solar self-contained, which uses high-power LEDs, giving a nominal range up to 6 nautical miles. It is characterized by its excellent optical system performance, minimising consumption and offering a large autonomy.

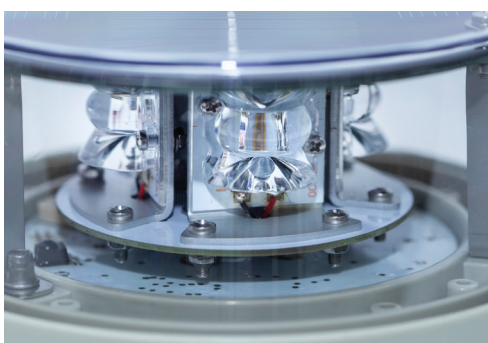
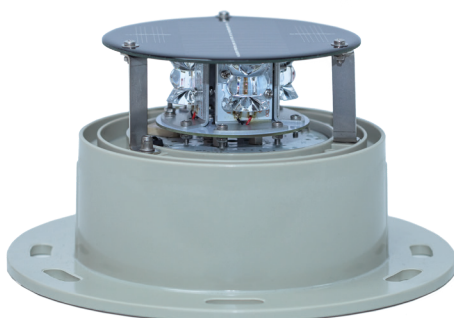
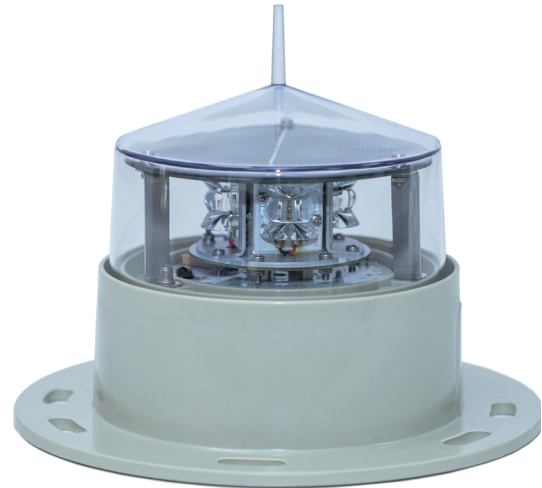
### Low consumption

Ideal for short-medium-range beaconing applications, on- and off-shore, requiring a low consumption, such as jetties, piers, buoys, fish farms, etc.

### Replaceable battery

The battery is replaceable, thus the complete lantern disposal is not necessary at the end of battery's life. Standard fixings allow for a quick lantern replacement.

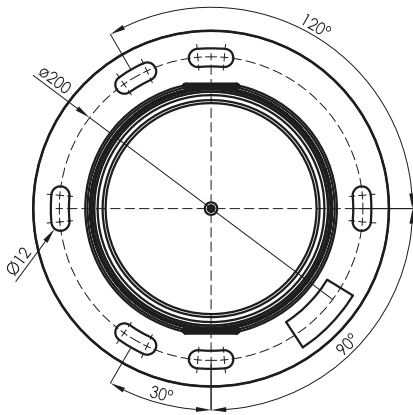
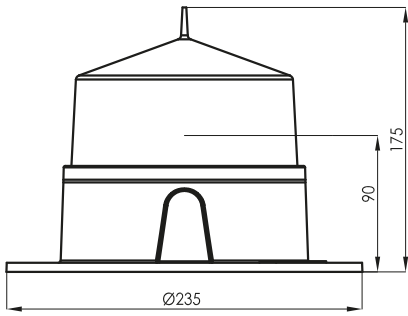
Designed according to IALA Recommendations.



## FEATURES

- *High-efficiency luminous system.*  
Up to 6 nm ( $T=0.74$ ), 7 nm ( $T=0.85$ ).
- *Vertical divergence up to 12° (50%  $I_0$ ).*
- *360° horizontal output.*
- *Average operation lifetime over 10 years.*
- *The battery can be easily replaced.*
- *IP 68 watertightness degree (immersion resistant).*
- *High shock resistance.*
- *Anti-humidity device in order to avoid condensation.*
- *Autonomy without solar charging up to 250 hours.*
- *Automatic energy management, according to solar radiation.*
- *Programming, configuration and operating status via PC or IR programmer.*

# MCL120



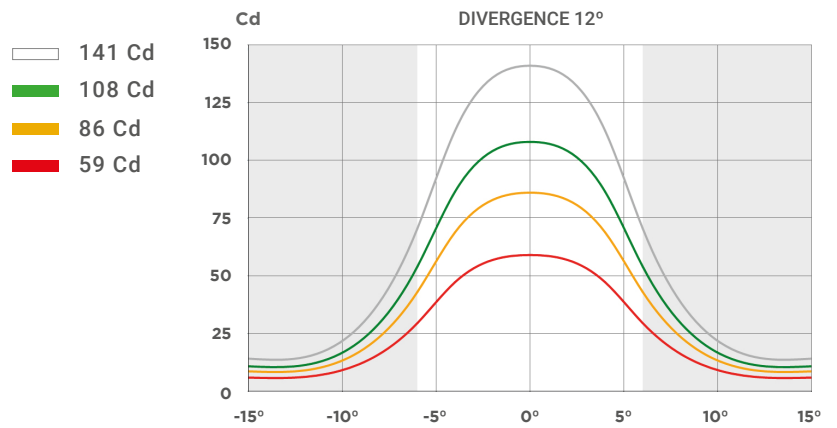
## Technical Features

<b>Light source:</b>	Ultra-bright LED diodes, with high-precision acrylic lenses.
<b>LED average life:</b>	More than 100,000 hours.
<b>Flash rhythms:</b>	256 rhythms (6 nos. user selectable).
<b>Solar module:</b>	1 no. of 1 W.
<b>Battery:</b>	4.8 Ah, Lead Crystal®, maintenance-free.
<b>Base:</b>	Glass-fibre reinforced polyamide PA66-GF30.
<b>Lens cover:</b>	UV stabilized polycarbonate.
<b>Watertightness degree:</b>	IP 68.

## Options

- PC programming kit.
- Antivandal screws kit.
- MCL120-SYNC (GPS synchronization).
- Other specifications available under request.

## Peak intensities (Cd)



Specifications subject to change without previous notice.

Luminous ranges will be affected depending on latitude, flash rhythms and chosen options.



PC



IR



GPS

OPTIONAL

## MCL160

### Great performance and light range

The MCL160 is a compact LED marine lantern, solar self-contained, with great optical efficiency and range, fitted with LED diodes of high intensity, reaching a nominal range up to 7 nautical miles in a compact-sized equipment.

### Optimized lens system

Its luminous source consists of an innovating lens system especially designed to take the maximum profit of LED diodes, thus obtaining an output of up to 180 Cd/W.

### Replaceable high capacity battery

The battery is replaceable, thus the complete lantern disposal is not necessary at the end of battery's life. In addition, due to its large capacity in relation to its compact size, energy availability is ensured at all times.

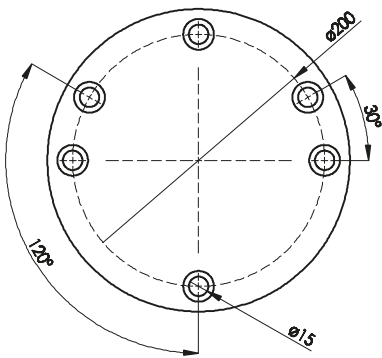
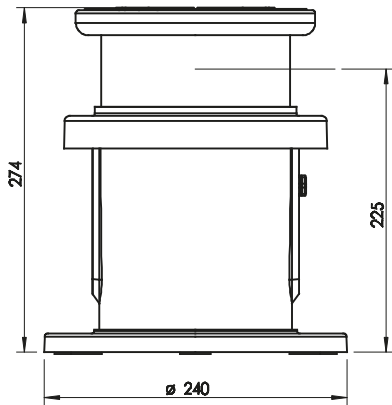
Designed according to IALA Recommendations.



## FEATURES

- *High-efficiency luminous system.*  
Up to 7 nm ( $T=0.74$ ), 9 nm ( $T=0.85$ ).
- *Vertical divergence up to 12° (50%  $I_0$ ).*
- *360° horizontal output.*
- *Average operation lifetime over 10 years.*
- *All components can be easily replaced.*
- *IP 68 watertightness degree (immersion resistant).*
- *High shock resistance.*
- *Anti-humidity device in order to avoid condensation.*
- *Autonomy without solar charging up to 300 hours.*
- *Automatic energy management, according to solar radiation.*
- *Programming, configuration and operating status via PC or IR programmer.*
- *PATENTED OPTICAL SYSTEM.*

# MCL160



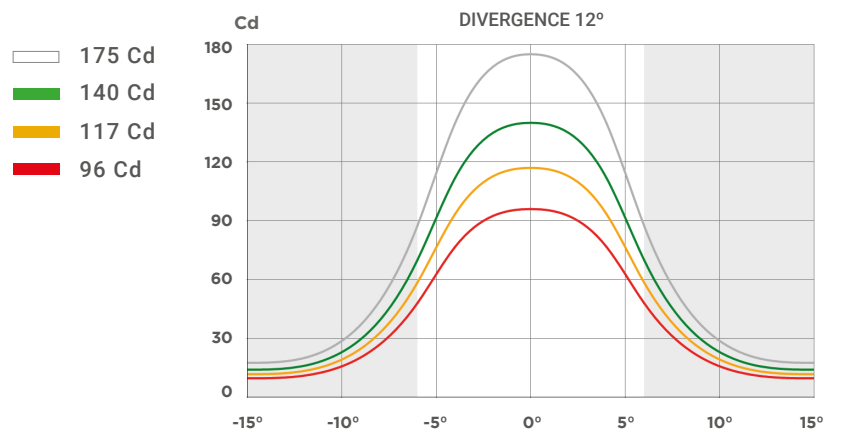
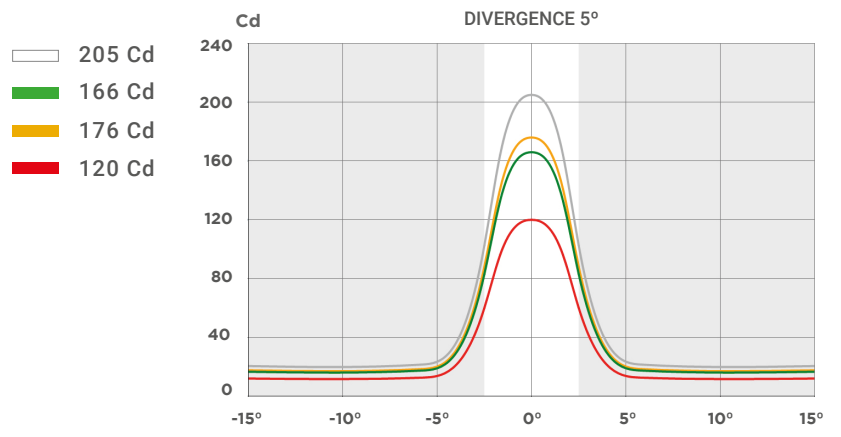
## Technical Features

<b>Light source:</b>	Ultra-bright LED diodes, with high-precision acrylic lenses.
<b>LED average life:</b>	More than 100,000 hours.
<b>Flash rhythms:</b>	256 rhythms (6 nos. user selectable).
<b>Solar module:</b>	1 no. of 2 W.
<b>Battery:</b>	14.4 Ah, Lead Crystal®, maintenance-free.
<b>Base:</b>	Glass-fibre reinforced polyamide PA66-GF30.
<b>Lens cover:</b>	UV stabilized acrylic.
<b>Watertightness degree:</b>	IP 68.

## Options

- PC programming kit.
- Bird deterrent spikes.
- MCL 160-SYNC (GPS synchronization).
- Other specifications available under request.
- Other battery capacities available.

## Peak intensities (Cd)



**I** Specifications subject to change without previous notice.  
Luminous ranges will be affected depending on latitude, flash rhythms and chosen options.



OPTIONAL

## MCL180

### Great optical efficiency

The MCL180 is a compact LED marine lantern, solar self-contained, with great optical efficiency and low consumption, fitted with LED diodes of high intensity, reaching a nominal range up to 7 nautical miles.

### Battery life up to 400h

With several large capacity battery options, the MCL180 lantern has an autonomy up to 400 hours of operation. This allows to ensure the operation of the beacon and its energy availability in the most demanding conditions.

### Lifetime operation over 10 years

Thanks to the high quality materials used in the MCL180 and its robust design, this lantern has a lifetime operation over 10 years in the most demanding conditions.

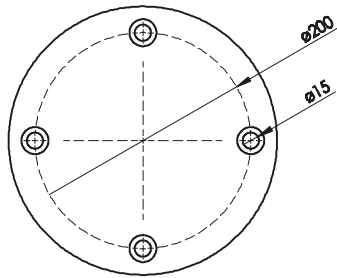
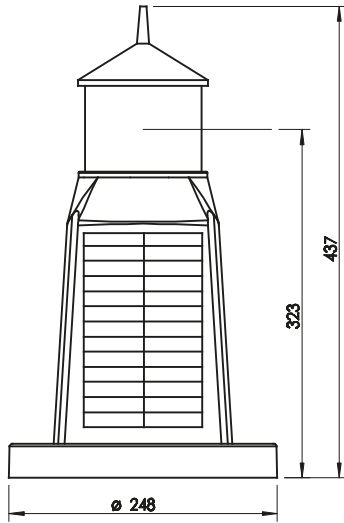
Designed according to IALA Recommendations.



## FEATURES

- *High-efficiency luminous system.*  
Up to 7 nm ( $T=0.74$ ), 10 nm ( $T=0.85$ ).
- *Vertical divergence up to 12° (50%  $I_0$ ).*
- *360° horizontal output.*
- *Average operation lifetime over 10 years.*
- *IP 68 watertightness degree (immersion resistant).*
- *Very resistant to marine environment.*
- *RS-232 serial port for setting adjustments by PC.*
- *Programming, configuration and operating status via PC or IR programmer.*
- *Autonomy without solar charging up to 400 hours.*
- *Automatic energy management, according to solar radiation.*
- *4 nos. solar modules of 2.35 W each.*
- *PATENTED OPTICAL SYSTEM.*

# MCL180



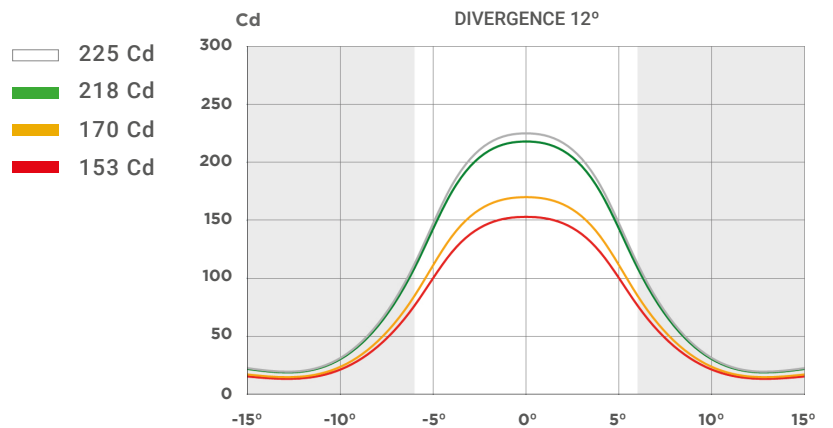
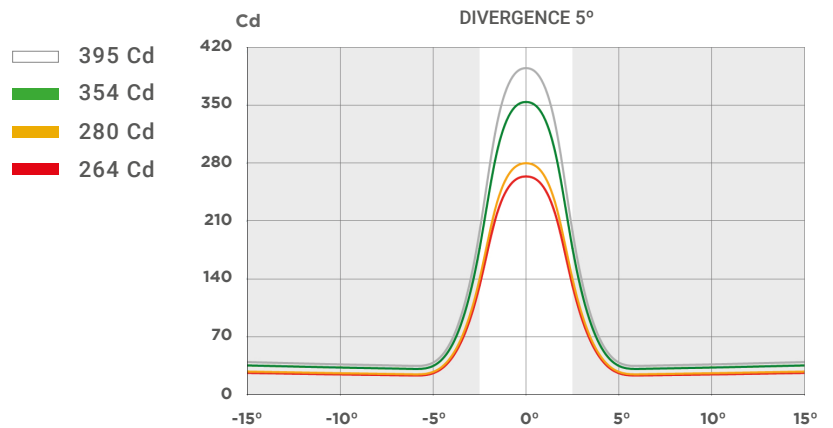
## Technical Features

<b>Light source:</b>	Ultra-bright LED diodes, with high-precision acrylic lenses.
<b>LED average life:</b>	More than 100,000 hours.
<b>Flash rhythms:</b>	256 rhythms (6 nos. user selectable).
<b>Solar module:</b>	4 nos. of 2.35 W.
<b>Battery:</b>	14.4 Ah, Lead Crystal®, maintenance-free.
<b>Base:</b>	Glass-fibre reinforced polyamide PA66-GF30.
<b>Lens cover:</b>	UV stabilised acrylic.
<b>Watertightness degree:</b>	IP 68.

## Options

- PC programming kit.
- Fixing kit for 4 bolts in a 200mm diameter.
- MCL180-SYNC (GPS synchronization).
- Other specifications available under request.
- Other battery capacities available.

## Peak intensities (Cd)



**!** Specifications subject to change without previous notice.  
Luminous ranges will be affected depending on latitude, flash rhythms and chosen options.



## MCL200

### Great optical efficiency

The MCL200 is a compact LED marine lantern, solar self-contained, with great optical efficiency and low consumption, fitted with LED diodes of high intensity, reaching a nominal range up to 9 nautical miles and offering a large autonomy.

### Wide remote control options

This lantern is ready to integrate different remote monitoring systems through GSM, UHF or satellite communications.

### Long battery life

With a wide range of battery capacities up to 16.9 Ah, the MCL200 lantern has an autonomy over 450 hours of operation, which allows to ensure the lantern's performance and its energy availability in the harshest conditions.

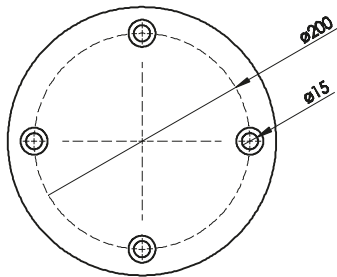
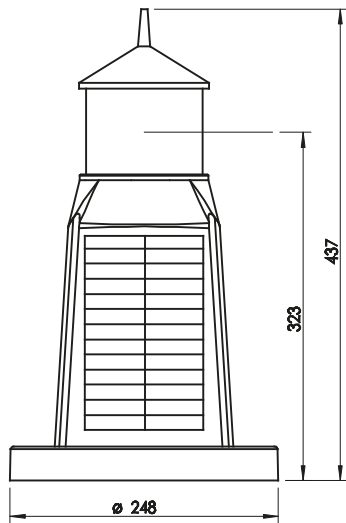
Designed according to IALA Recommendations.



## FEATURES

- *High-efficiency luminous system.*  
Up to 9 nm ( $T=0.74$ ), 12 nm ( $T=0.85$ ).
- *Vertical divergence up to 12° (50%  $I_0$ ).*
- *360° horizontal output.*
- *Average operation lifetime over 10 years.*
- *IP 68 watertightness degree (immersion resistant).*
- *Double RS-232 serial port for setting adjustments by PC and remote monitoring system.*
- *Programming, configuration and operating status via PC, Bluetooth or IR programmer as an option.*
- *Ready to integrate remote monitoring via GSM, UHF or satellite, and synchronization module via GPS.*
- *Autonomy without solar charging up to 450 hours.*
- *Automatic energy management, according to solar radiation.*
- *4 nos. solar modules of 2.5W each.*
- *PATENTED OPTICAL SYSTEM.*

# MCL200



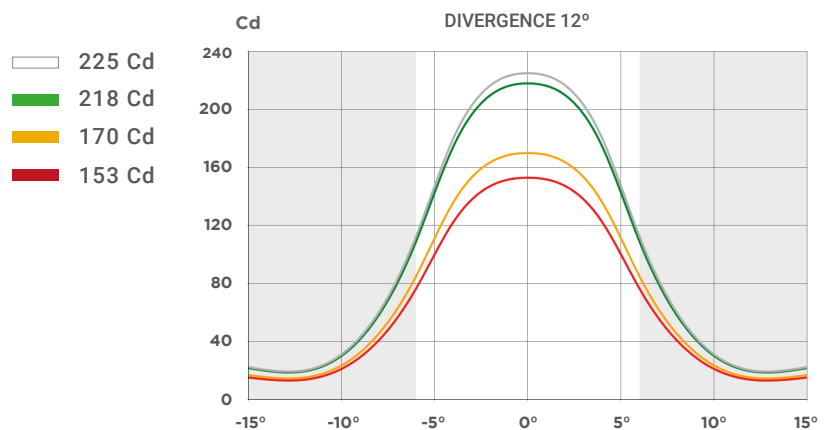
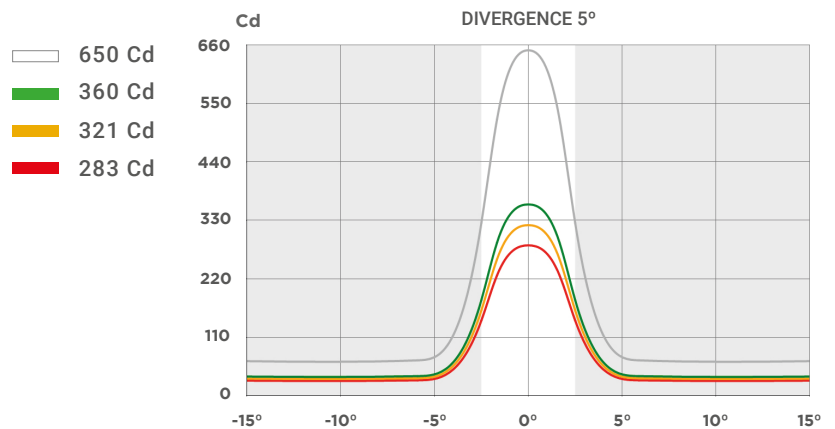
## Technical Features

<b>Light source:</b>	Ultra-bright LED diodes, with high-precision acrylic lenses.
<b>LED average life:</b>	More than 100,000 hours.
<b>Flash rhythms:</b>	256 rhythms (6 nos. user selectable).
<b>Solar module:</b>	4 nos. of 2.5 W.
<b>Battery:</b>	16.9 Ah, Lead Crystal®, maintenance-free.
<b>Base:</b>	Glass-fibre reinforced polyamide PA66-GF30.
<b>Lens cover:</b>	UV stabilized acrylic.
<b>Watertightness degree:</b>	IP 68.

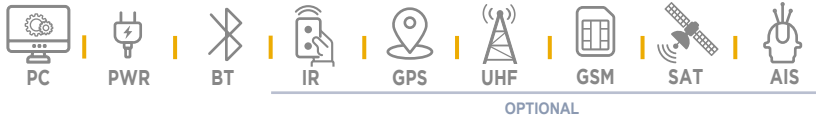
## Options

- Infrared (IR) programmer.
- Charging port and optional charger.
- Fixing kit for 4 bolts in a 200 mm diameter.
- Other specifications available under request.
- Other battery capacities available.
- MCL200-SYNC (GPS synchronization).
- MCL200-TR (Radio remote monitoring).
- MCL200-TS (Satellite remote monitoring).
- MCL200-TG (GSM remote control).

## Peak intensities (Cd)



**!** Specifications subject to change without previous notice.  
Luminous ranges will be affected depending on latitude, flash rhythms and chosen options.



## MCL250

### Great optical efficiency

The MCL250 lantern is fitted with LED diodes of high intensity and low consumption, reaching a nominal range up to 11 nautical miles.

### Wide remote control options

This lantern is ready to integrate different remote monitoring systems through GSM, UHF or satellite communications.

### Long battery life

With a wide range of battery capacities up to 66 Ah, the MCL250 lantern has an autonomy over 450 hours of operation, which allows to ensure the lantern's performance and its energy availability in the most demanding conditions.

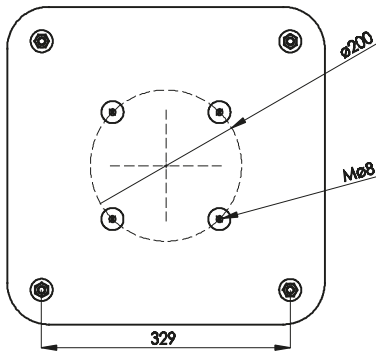
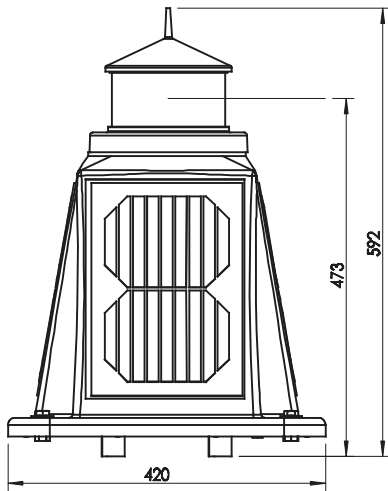
Designed according to IALA Recommendations.



## FEATURES

- *High-efficiency luminous system.*  
Up to 11 nm ( $T=0.74$ ), 15 nm ( $T=0.85$ ).
- *Vertical divergence up to 12° (50%  $I_0$ ).*
- *360° horizontal output.*
- *Average operation lifetime over 10 years.*
- *IP 68 watertightness degree (immersion resistant).*
- *Double RS-232 serial port for setting adjustments by PC and remote monitoring system.*
- *Programming, configuration and operating status via PC, Bluetooth or IR programmer as an option.*
- *Ready to integrate remote monitoring via GSM, UHF or satellite, synchronization via GPS or AIS AtoN module.*
- *Autonomy without solar charging up to 700 hours.*
- *Automatic energy management, according to solar radiation.*
- *4 nos. solar modules of 7.5 W each.*
- *PATENTED OPTICAL SYSTEM.*

# MCL250



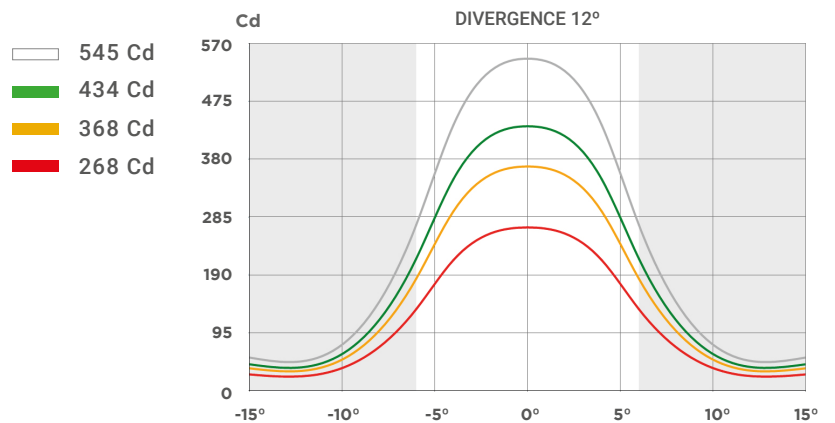
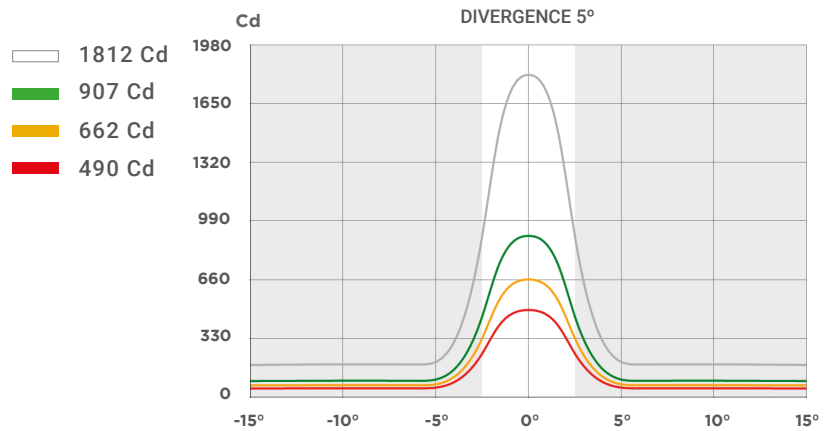
## Technical Features

<b>Light source:</b>	Ultra-bright LED diodes, with high-precision acrylic lenses.
<b>LED average life:</b>	More than 100,000 hours.
<b>Flash rhythms:</b>	256 rhythms (6 nos. user selectable).
<b>Solar module:</b>	4 nos. of 7.5 W.
<b>Battery:</b>	Up to 66 Ah, Lead Crystal®, maintenance-free.
<b>Base:</b>	Reinforced polyamide and rotomoulded polyethylene.
<b>Lens cover:</b>	UV stabilised acrylic.
<b>Watertightness degree:</b>	IP 68.

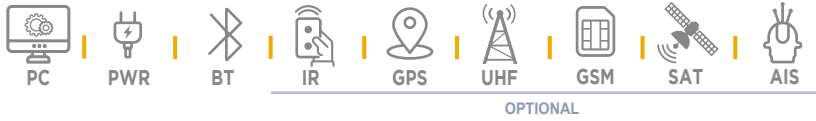
## Options

- Infrared (IR) programmer.
- Fixing kit for 4 bolts in a 367 mm diameter.
- Other specifications available under request.
- Other battery capacities available.
- MCL250-SYNC (GPS synchronization).
- MCL250-TG (GSM remote control).
- MCL250-TR (Radio remote monitoring).
- MCL250-TS (Satellite remote monitoring).
- MCL250-AIS (AIS AtoN).

## Peak intensities (Cd)



**!** Specifications subject to change without previous notice.  
Luminous ranges will be affected depending on latitude, flash rhythms and chosen options.



## MCL250N

### Wreck-marking

The MCL 250N is an autonomous LED beacon with high luminous efficiency and low consumption, consisting of 12 high intensity LED diodes on two levels, one in amber, another in blue; specially designed to signal wrecks and new hazards in accordance with IALA - AISM Recommendation No. O-133 of December 2005.

### Wide remote control options

This lantern is ready to integrate different remote monitoring systems through GSM, UHF or satellite communications. It also has the possibility of fitting AIS AtoN devices and being monitored through this system

### Battery life over 750h

With a wide range of battery capacities up to 66 Ah, the MCL250N lantern has a battery life over 750 hours of autonomy, which allows to ensure the lantern performance and its wide range of supplementary equipment included, in the harshest conditions.

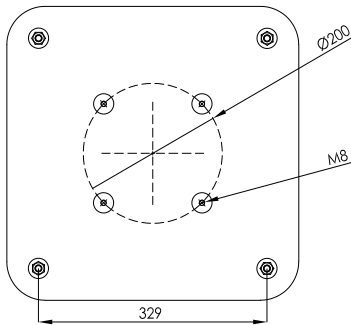
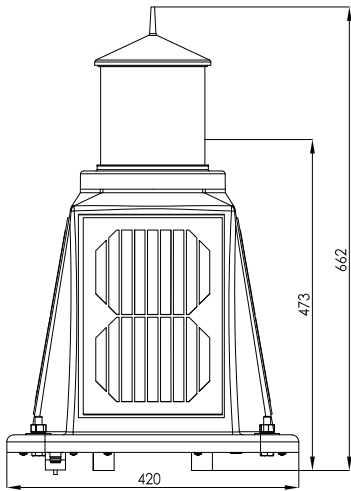
Designed according to IALA Recommendations.



## FEATURES

- *High-efficiency luminous system.*  
5 nm ( $T=0.74$ ), 6 nm ( $T=0.85$ ).
- *Vertical divergence of 12° (50%  $I_0$ ).*
- *360° horizontal output.*
- *4 nos. solar modules of 7.5 W each.*
- *Average operation lifetime over 10 years.*
- *IP 68 watertightness degree (immersion resistant).*
- *Double RS-232 serial port for setting adjustments by PC and remote monitoring system.*
- *Programming, configuration and operating status via PC, Bluetooth or IR programmer as an option.*
- *Ready to integrate remote monitoring via GSM, UHF or satellite, synchronization via GPS or AIS AtoN module.*
- *Autonomy without solar charging up to 750 hours.*
- *Automatic energy management, according to solar radiation.*
- *PATENTED OPTICAL SYSTEM.*

# MCL250N



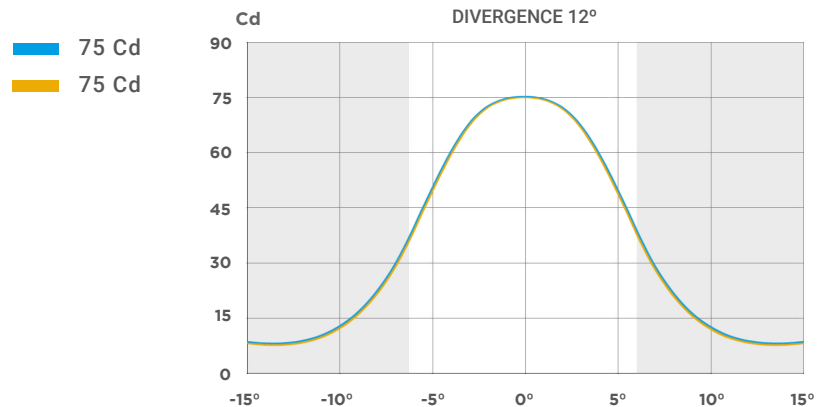
## Technical Features

<b>Light source:</b>	Ultra-bright LED diodes, with high-precision acrylic lenses.
<b>LED average life:</b>	More than 100,000 hours.
<b>Flash rhythms:</b>	256 rhythms (6 nos. user selectable).
<b>Solar module:</b>	4 nos. of 7.5 W.
<b>Battery:</b>	Up to 66 Ah, Lead Crystal®, maintenance-free.
<b>Base:</b>	Reinforced polyamide and polyamide and rotomoulded polyethylene.
<b>Lens cover:</b>	UV stabilized acrylic.
<b>Watertightness degree:</b>	IP 68.

## Options

- Infrared (IR) programmer.
- PC programming kit.
- Fixing kit for 4 bolts in a 200 mm diameter.
- Other specifications available under request.
- MCL250N-SYNC (GPS synchronization).
- MCL250N-TG (GSM remote control).
- MCL250N-TR (Radio remote monitoring).
- MCL250N-TS (Satellite remote monitoring).
- MCL250N-AIS (AIS AtoN).

## Peak intensities (Cd)



Specifications subject to change without previous notice.

Luminous ranges will be affected depending on latitude, flash rhythms and chosen options.



## MCL330

### Great optical efficiency

The MCL330 is a compact LED marine lantern with great optical efficiency and low consumption, made up of LED diodes of high intensity, reaching a nominal range up to 8 nautical miles and offering a great autonomy.

### Multiple remote control options

This lantern is ready to integrate different remote monitoring systems through GSM, UHF or satellite communications.

### Display screen

The MCL330 includes a display, which allows to check directly the lantern parameters without the need for additional equipment.

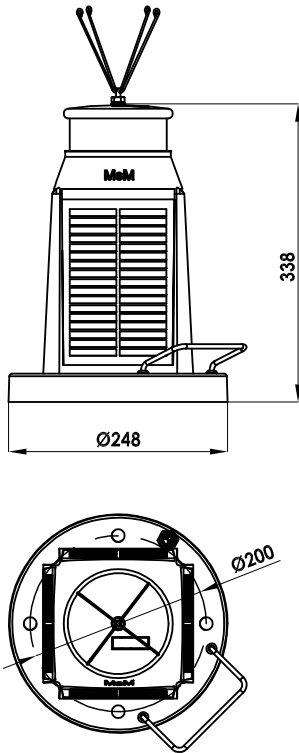
Designed according to IALA Recommendations.



## FEATURES

- High-efficiency luminous system.  
Up to 8 nm ( $T=0.74$ ), 10 nm ( $T=0.85$ ).
- Vertical divergence up to  $8^\circ$  ( $50\% I_0$ ).
- $360^\circ$  horizontal output.
- Average operational lifetime over 15 years.
- IP 68 watertightness degree (immersion resistant).
- Double RS-232 serial port for setting adjustments by PC and remote monitoring system.
- Programming, configuration and operating status via PC, Bluetooth or IR programmer as an option.
- Ready to integrate remote monitoring via GSM, UHF or satellite, and synchronization via GPS.
- Automatic energy management, according to solar radiation.
- 4 nos. solar modules located on the sides of the lantern.
- Transport handle, for easy removal of the lantern without obstructing solar rays.

# MCL330



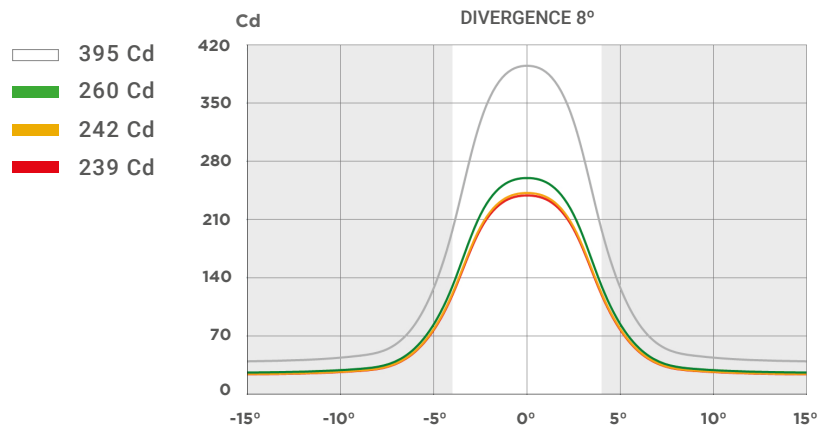
## Technical Features

<b>Light source:</b>	Ultra-bright LED diodes, distributed circularly (360°).
<b>LED average life:</b>	More than 100,000 hours.
<b>Flash rhythms:</b>	256 rhythms (6 nos. user selectable).
<b>Solar module:</b>	4 nos. of 2.5 W.
<b>Battery:</b>	16.9 Ah, Lead Crystal®, maintenance-free.
<b>Base:</b>	Reinforced polyamide and polyamide and rotomoulded polyethylene.
<b>Lens cover:</b>	UV stabilized acrylic.
<b>Watertightness degree:</b>	IP 68.

## Options

- Infrared (IR) programmer.
- PC programming kit.
- Fixing kit for 4 bolts in a 200 mm diameter.
- Other specifications available under request.
- MCL330-SYNC (GPS synchronization).
- MCL330-TG (GSM remote control).
- MCL330-TR (Radio remote monitoring).
- MCL330-TS (Satellite remote monitoring).

## Peak intensities (Cd)



Specifications subject to change without previous notice.

Luminous ranges will be affected depending on latitude, flash rhythms and chosen options.



## MCL400

### Great optical efficiency

The MCL 400 is a compact LED marine lantern of medium and long range, with built-in solar power, characterized by great optical efficiency and low consumption, made up of LED diodes of high intensity, reaching a maximum range of 22 nautical miles.

### Multiple remote control options

This lantern is ready to integrate different remote monitoring systems through GSM, UHF or satellite communications. It also has the possibility of fitting AIS AtoN devices and being monitored through this system.

### Antivandal design

The MCL400 has been designed with special consideration to vandalism measures, as its installation is very common in very isolated places. It has special screws, panels with anti-theft fitting and a high resistant marine aluminum chassis.

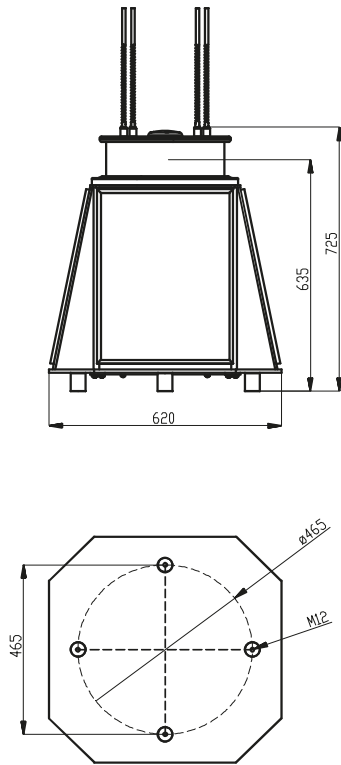
Designed according to IALA Recommendations.



## FEATURES

- *High-efficiency luminous system.*  
Up to 15 nm ( $T=0.74$ ), 22 nm ( $T=0.85$ ).
- *Vertical divergence of  $2^\circ$  ( $50\% I_0$ ).*
- *$360^\circ$  horizontal output.*
- *Average operation lifetime over 10 years.*
- *IP 67 watertightness degree (immersion resistant).*
- *Double RS-232 serial port for setting adjustments by PC and remote monitoring system.*
- *Programming, configuration and operating status via PC, Bluetooth or IR programmer as an option.*
- *Ready to integrate remote monitoring via GSM, UHF or satellite, synchronization via GPS or AIS AtoN module.*
- *Autonomy without solar charging up to 400 hours.*
- *Automatic energy management, according to solar radiation.*
- *4 nos. solar modules of 20 W each.*
- *Base made of marine aluminium.*

# MCL400



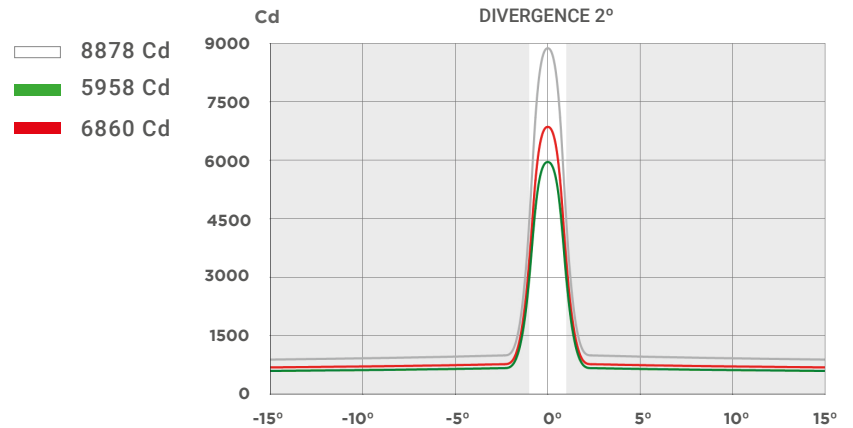
## Technical Features

<b>Light source:</b>	Ultra-bright LED diodes.
<b>LED average life:</b>	More than 100,000 hours.
<b>Flash rhythms:</b>	256 rhythms (6 nos. user selectable).
<b>Solar module:</b>	4 nos. of 20 W.
<b>Battery:</b>	Up to 78 Ah, Lead Crystal®, maintenance-free.
<b>Base:</b>	Marine Aluminium.
<b>Lens cover:</b>	UV stabilized acrylic.
<b>Watertightness degree:</b>	IP 67.

## Options

- Infrared (IR) programmer.
- PC programming kit.
- Fixing kit for 4 bolts in a 465 mm diameter.
- Hoisting kit.
- Other specifications available under request.
- Other battery capacities available.
- MCL400-SYNC (GPS synchronization).
- MCL400-TG (GSM remote control).
- MCL400-TR (Radio remote monitoring).
- MCL400-TS (Satellite remote monitoring).
- MCL400-AIS (AIS AtoN).

## Peak intensities (Cd)



Specifications subject to change without previous notice.

Luminous ranges will be affected depending on latitude, flash rhythms and chosen options.



## MCL400HD

### Great optical efficiency

The MCL400HD is a compact LED marine lantern of medium range, with built-in solar power, characterized by great optical efficiency and low consumption, made up of LED diodes of high intensity, reaching a maximum range of 22 nautical miles.

### Multiple remote control options

This lantern is ready to integrate different remote monitoring systems through GSM, UHF or satellite communications. It also has the possibility of fitting AIS AtoN devices and being monitored through this system.

### Antivandal design

The MCL400HD has been designed with special consideration to vandalism measures, as its installation is very common in very isolated places. It has special screws, panels with anti-theft anchoring and a high resistant aluminum chassis.

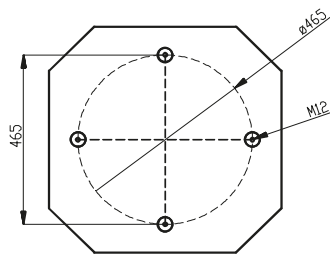
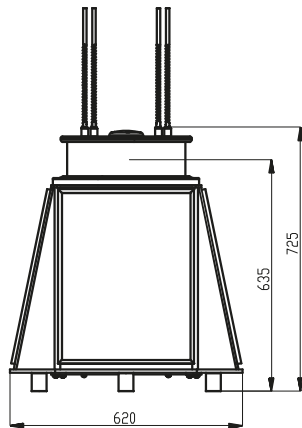
Designed according to IALA Recommendations.



## FEATURES

- High-efficiency luminous system.  
Up to 15 nm ( $T=0.74$ ), 22 nm ( $T=0.85$ ).
- Vertical divergence up to  $12^\circ$  ( $50\% I_0$ ).
- $360^\circ$  horizontal output.
- Average operation lifetime over 10 years.
- IP 67 watertightness degree (immersion resistant).
- Double RS-232 serial port for setting adjustments by PC and remote monitoring system.
- Programming, configuration and operating status via PC, IR programmer or Bluetooth as an option.
- Ready to integrate remote monitoring via GSM, UHF or satellite, synchronization via GPS or AIS AtoN module.
- Autonomy without solar charging up to 400 hours.
- Automatic energy management, according to latitude.
- 4 nos. solar modules of 20 W each.
- Base made of marine aluminium.

# MCL400HD



## Technical Features

<b>Light source:</b>	Ultra-bright LED diodes.
<b>LED average life:</b>	More than 100,000 hours.
<b>Flash rhythms:</b>	256 rhythms (6 nos. user selectable).
<b>Solar module:</b>	4 nos. of 20 W.
<b>Battery:</b>	Up to 78 Ah, Lead Crystal®, maintenance-free.
<b>Base:</b>	Stainless steel.
<b>Lens cover:</b>	UV stabilised acrylic.
<b>Watertightness degree:</b>	IP 67.

## Options

- Infrared (IR) programmer.
- PC programming kit.
- Fixing kit for 4 bolts in a 465 mm diameter.
- Hoisting kit.
- Other specifications available under request.
- Other battery capacities available.
- MCL400-SYNC (GPS synchronization).
- MCL400-TG (GSM remote control).
- MCL400-TR (Radio remote monitoring).
- MCL400-TS (Satellite remote monitoring).
- MCL400-AIS (AIS AtoN).

**!** Specifications subject to change without previous notice.

Luminous ranges will be affected depending on latitude, flash rhythms and chosen options.