



INOX.

TOWER + ACCESSORIES

MTI

Designed to integrate flashing and rotating beacons

Mediterraneo's MTI Stainless-steel Towers are especially designed to integrate flashing and rotating beacons c/w their solar power supply system, in order to operate as medium- and long-range Lighthouses.

Watertight housing

Thanks to its watertightness, batteries, control units and other items can be housed inside the tower, in order to be protected from the weather. Protection handrail, inner ladder, beacon support and metallic accessories are also manufactured from stainless steel.

Modular Design

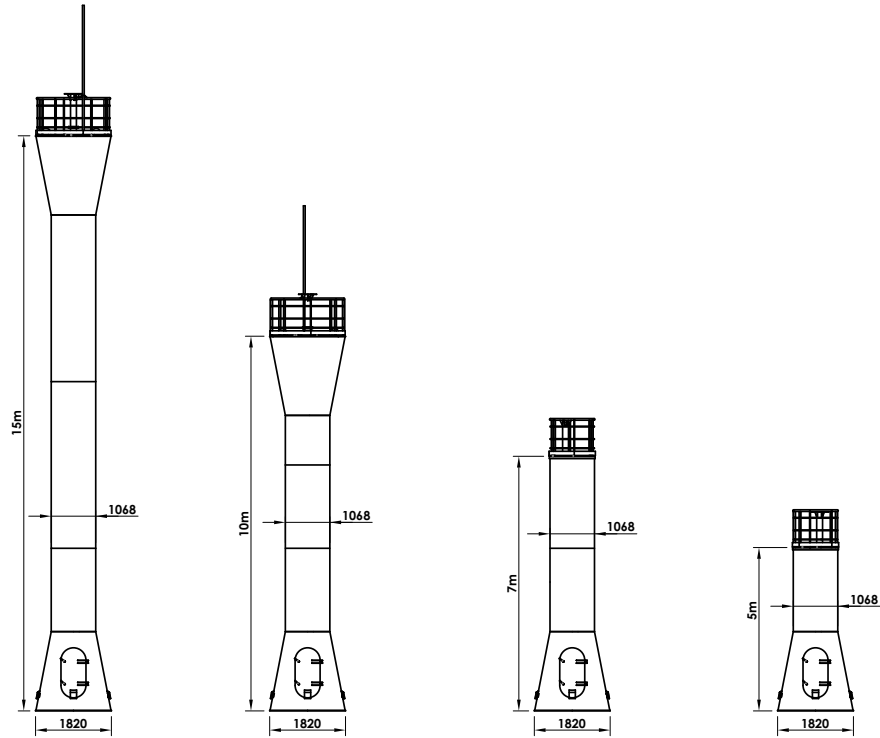
MSM bears in mind the difficult access to places where they will be installed; so we take special care of this factor in our designs by making all our towers modular.

Their large surface allows to obtain a day mark according to IALA Recommendations.



FEATURES

- *Stainless-steel manufacturing.*
- *Heights from 5 to 15 metres.*
- *Easy assembly due to its modular architecture.*
- *Fast erection with use of crane.*
- *Spacious sized top platform to hold a high number of solar modules and batteries.*
- *Wind-speed resistance up to 200 Kph.*
- *Inner access ladder.*
- *Access door with safety lock.*
- *Protection against vandalism.*
- *Provided with templates for accurate anchor bolt positioning.*
- *Special primer and two external polyurethane paint coats.*
- *Very useful as day mark.*



Specifications

- AISI 304 stainless steel.
- Special primer and two external polyurethane paint coats.
- Internal ventilation system.
- Inner access ladder.

Options

- Solar module supports and battery box on top platform.
- AISI 316L stainless steel.
- Racon support.
- Lightning protection system.
- Top mark.
- Radar reflector.
- Piece-lifting manual system for tower erection.
- Other heights available under request.

MTI

MODEL	FOCAL HEIGHT	BOTTOM BASE	TOP BASE	DIAMETER	WIND SPEED
MTI 50	6.5 m	Ø 1.8 m	Ø 1 m	1 m	200 km/h
MTI 70	8.5 m	Ø 1.8 m	Ø 1 m	1 m	200 km/h
MTI 100	11.5 m	Ø 1.8 m	Ø 1.8 m	1 m	200 km/h
MTI 150	16.5 m	Ø 1.8 m	Ø 1.8 m	1 m	200 km/h

! Specifications subject to change without previous notice.



GRP

TOWER



INOX.

ACCESSORIES

MTP

Able to operate as medium- and long-range lighthouse

Mediterraneo's GRP towers, model MTP, are engineered to integrate flashing and rotating beacons c/w their solar power supply system, in order to operate as medium- and long-range Lighthouses.

Watertight housing

These towers are manufactured from GRP (glass-reinforced polyester). Colour is pigmented in the raw material, thus the tower colour remains unaltered. Thanks to its watertightness, batteries, control units and other items can be housed inside the tower, in order to be protected from the weather.

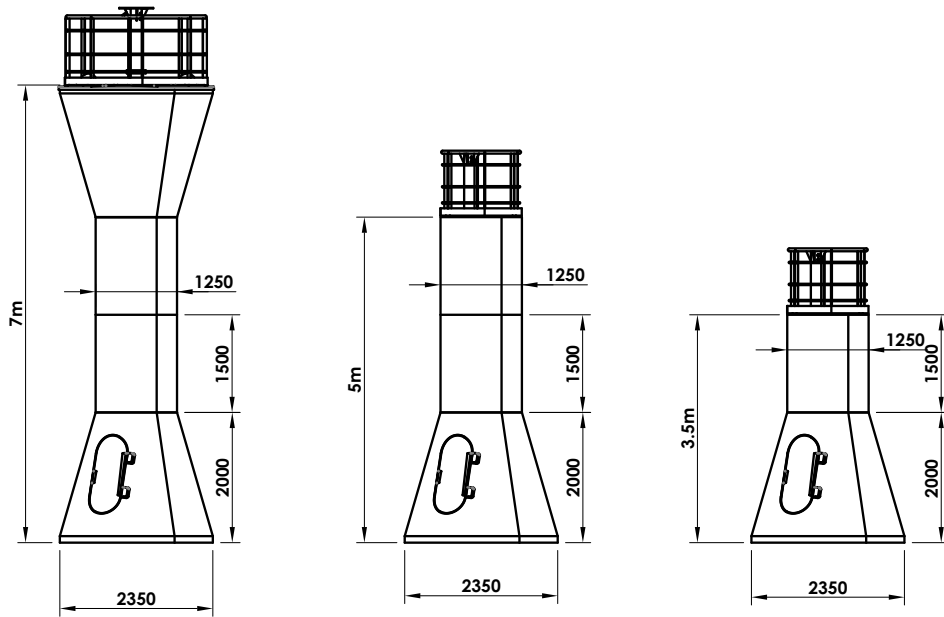
Modular design

MSM bears in mind the difficult access to places where they will be installed; so we take special care of this factor in our designs by making all our GPR towers modular. Their large surface allows to obtain a day mark according to IALA Recommendations.



FEATURES

- *Manufactured from glass reinforced polyester (GRP).*
- *Colour impregnated in the GRP, no need to repaint.*
- *Heights from 3.5 to 10 metres.*
- *Easy assembly, due to its modular architecture.*
- *Fast erection without crane.*
- *Spacious sized top platform to hold solar modules and batteries.*
- *Tower accessories and bolting made from stainless steel.*
- *Wind-speed resistance higher than 180 kph.*
- *Inner access ladder.*
- *Access door with safety lock.*
- *Provided with templates for accurate anchor bolt positioning.*
- *Very useful as day mark.*



Options

- Internal structure manufactured from stainless steel.
- Solar module supports and battery box on top platform.
- Racon support.
- Lightning protection system.
- Top mark.
- Radar reflector.
- Piece-lifting manual system for tower erection.
- Other heights available under request.

MTP

MODEL	MATERIAL	FOCAL HEIGHT	BOTTOM BASE	TOP BASE	DIAMETER	WIND SPEED
MTP35	Glass reinforced polyester (GRP)	5.0 m	Ø 2.35 m	Ø 1.25 m	1.25 m	180 km/h
MTP50	Glass reinforced polyester (GRP)	6.5 m	Ø 2.35 m	Ø 1.25 m	1.25 m	180 km/h
MTP70	Glass reinforced polyester (GRP)	8.5 m	Ø 2.35 m	Ø 2.35 m	1.25 m	180 km/h

! Specifications subject to change without previous notice.



GRP

TOWER



INOX.

ACCESSORIES

MTP-S

Able to operate as medium- and long-range lighthouse

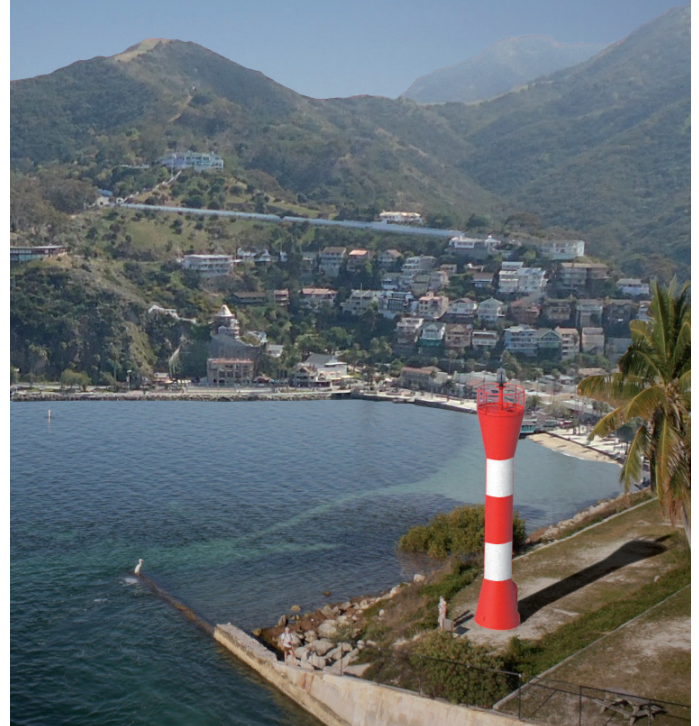
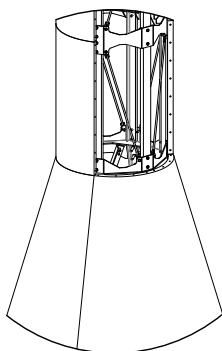
Mediterraneo's MTP-S towers are especially engineered to incorporate long-range rotating beacons c/w their solar power supply system, in order to operate as medium- and long-range Lighthouses.

Watertight housing

They are manufactured from hot-dip galvanised steel and covered with GRP (Glass Reinforced Polyester) plates. Colour is impregnated in the raw material. Thanks to its watertightness, batteries, control units and other items can be housed inside the tower, in order to be protected from the weather.

Modular Design

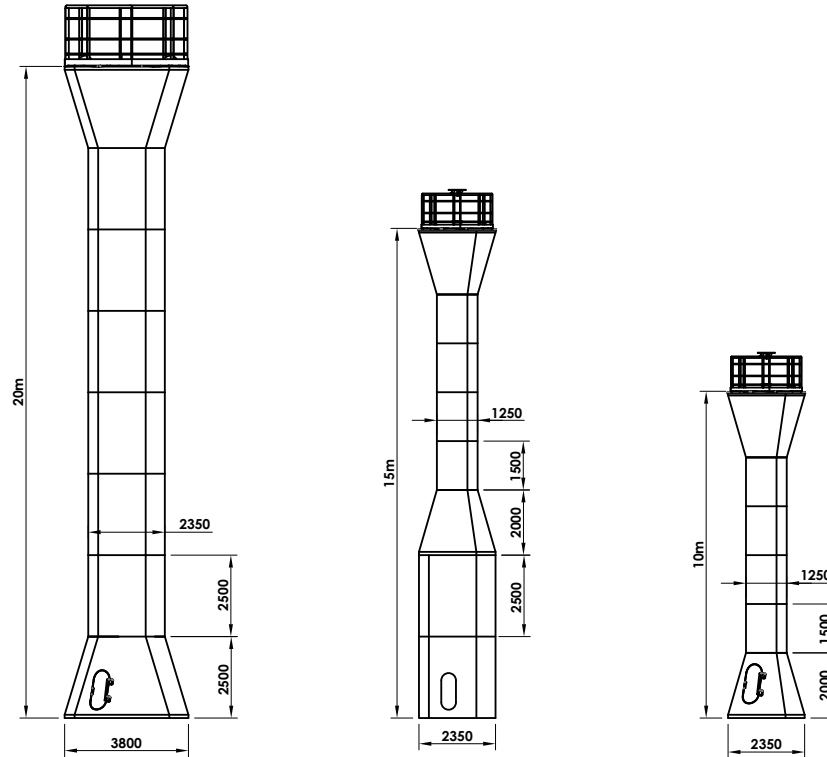
MSM bears in mind the difficult access to places where they will be installed; so we take special care of this factor in our designs by making all our GPR towers modular. Their large surface allows to obtain a day mark according to IALA Recommendations.



FEATURES

- Manufactured from hot-dip galvanised steel and covered with glass reinforced polyester (GRP).
- Colour impregnated in the GRP.
- Heights from 10 to 20 metres.
- Easy assembly due to its modular architecture.
- Fast erection without crane.
- Spacious sized top platform to hold a high number of solar modules and batteries.
- Tower accessories and bolting made from stainless steel.
- Wind-speed resistance higher than 200 Kph.
- Inner access ladder.
- Access door with safety lock.
- Provided with templates for accurate anchor bolt positioning.

MTP-S



Options

- Internal structure manufactured from stainless steel.
- Solar module supports and battery box on top platform.
- Racon support.
- Lightning protection system.
- Top mark.
- Radar reflector.
- Piece-lifting manual system for tower erection.
- Other heights available under request.

MTP-S

MODEL	MATERIAL	FOCAL HEIGHT	BOTTOM BASE	TOP BASE	DIAMETER	WIND SPEED
MTP-S100	Hot-dip galvanised steel. Glass reinforced polyester.	11.2 m	Ø 2,35 m	Ø 2.35 m	1.25 m	200 km/h
MTP-S150	Hot-dip galvanised steel. Glass reinforced polyester.	16.2 m	Ø 2,35 m	Ø 2.35 m	1.25 m	200 km/h
MTP-S200	Hot-dip galvanised steel. Glass reinforced polyester.	21.2 m	Ø3,80 m	Ø3.80 m	2.35 m	200 km/h

! Specifications subject to change without previous notice.



GRP

TOWER



INOX.

ACCESSORIES

TPG

Designed for short and medium range beaconing

Mediterraneo's TPG pyramidal-shape towers are small towers especially engineered to incorporate compact self-contained lanterns and marine flashing beacons fitted with solar power system for short and medium range beaconing applications.

They can be painted to serve as day mark

They are manufactured from GRP (Glass Reinforced Polyester). Colour is impregnated in the raw material, this way the tower colour remains unaltered, not needing to be repainted eventually. They can be painted to serve as a good day mark, according to IALA Recommendations.

Dismounted or fully assembly supply

They incorporate protection ring and beacon support. These accessories are made from AISI 316L stainless steel.

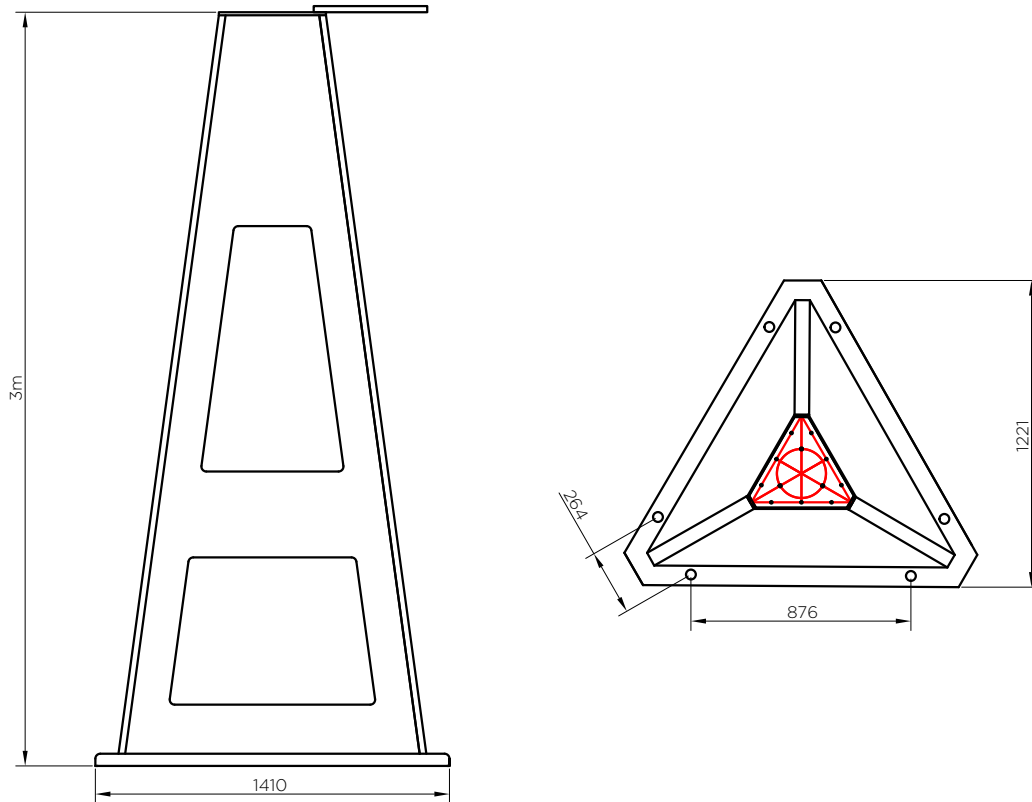
These small towers can be supplied dismounted or fully assembled, ready for their installation in site with anchoring bolts.



FEATURES

- *Manufactured from glass reinforced polyester (GRP).*
- *Colour impregnated in the GRP.*
- *Tower height of 3 m, focal height up to 4.2 m.*
- *Easy assembly due to its modular architecture.*
- *Tower accessories made from AISI 316L stainless steel (protection ring and beacon support).*
- *Wind speed up to 180 kph.*
- *Fixing by anchoring bolts.*
- *Provided with template for accurate anchor bolt positioning.*
- *Designed according to IALA Recommendations.*
- *Aluminium movable ladder to access the lantern.*

TGP



Options

Solar module supports.

Beacon support of 4.2 m focal height.

TPG

MODEL	MATERIAL	FOCAL HEIGHT	WIND SPEED
TPG30	Glass reinforced polyester (GRP)	3.5 m	180 km/h



Specifications subject to change without previous notice.



GALV.

TOWER

MTS

Designed to integrate long-range rotating beacons

Mediterraneo's Steel Towers model MTS have been especially designed to integrate long-range rotating beacons c/w their solar power supply system.

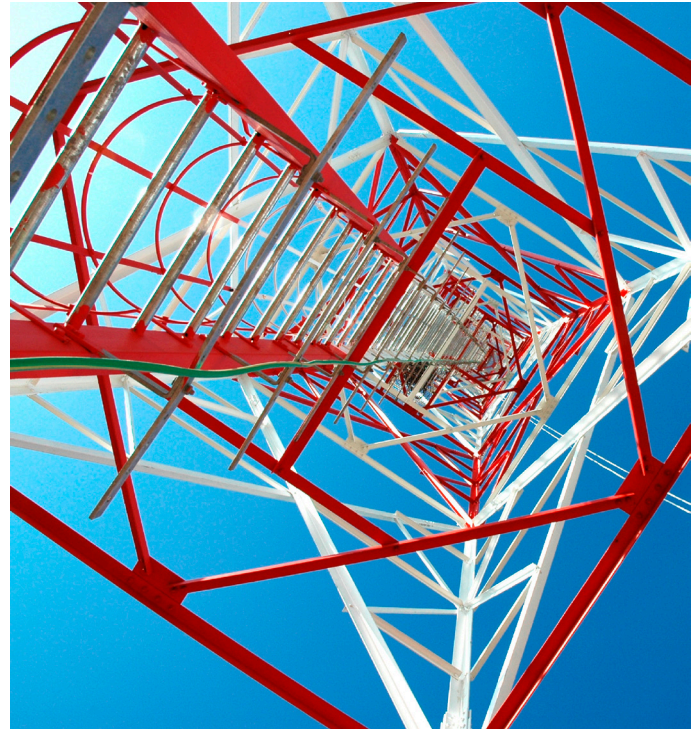
These towers are manufactured from hot-dip galvanized steel. Although standard heights are 20, 30 and 40 metres, we can also designed and supply any height under customer's request.

Multiple solar modules can be installed

MTS towers are engineered and developed under the most restrictive safety standards. Provided the spacious size of the top platform, it is possible to hold a high number of solar modules, batteries and other accessories.

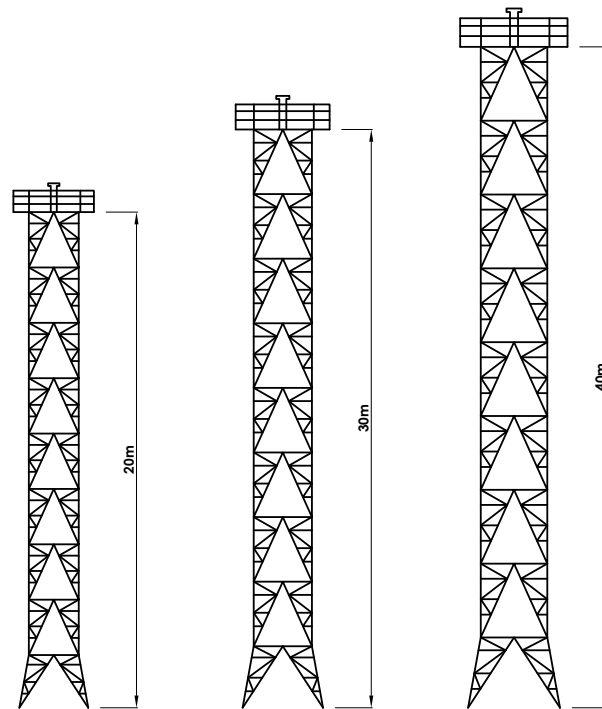
Modular Design

MSM bears in mind the difficult access to places where they will be installed; so we take special care of this factor in our designs by making all our towers modular.



FEATURES

- Heights from 20 to 40 metres.
- Hot-dip galvanized steel. Corrosion resistant.
- Easy assembly due to its modular architecture.
- 42 ST steel profiles according to European Standards.
- Restricted access to top platform, with safety lock.
- Fast erection without crane. Provided with templates for the accurate anchor bolt positioning.
- Spacious sized top platform to hold a high number of solar modules and batteries.
- Wind-speed resistance up to 200 Kph.
- Access ladder with protection handrail.
- High-resistance bolting.
- Plates to fix electric conductor, if necessary.



Options

- Supports for solar modules and battery cabinet on the top platform.
- Lightning protection system.
- Day marks.
- Radar reflector.
- Marine quality paint.
- Housing for diesel generator at the tower base.
- Piece-lifting manual system for tower erection.
- Other heights available under request.

MTS

MODEL	MATERIAL	FOCAL HEIGHT	TOP BASE	WIND SPEED
MTS200	Hot-dip galvanised steel	21.5 m	9.00 m ²	200 km/h
MTS300	Hot-dip galvanised steel	31.5 m	12.25 m ²	200 km/h
MTS400	Hot-dip galvanised steel	41.5 m	16.00 m ²	200 km/h

! Specifications subject to change without previous notice.



GALV.



INOX.

TOWER + ACCESSORIES

MPM

All kind of poles for beacon support design

MSM designs and manufactures all kind of poles for beacon support. They are particularly recommended for short- and medium-range beaconing applications.

Standard and tailor-made dimensions

They are made from either hot-dip galvanised or stainless steel. Even though we have available standard dimensions, our Engineering Department can design the pole most suitable to the client's requirements.

Battery boxes and solar modules can be integrated

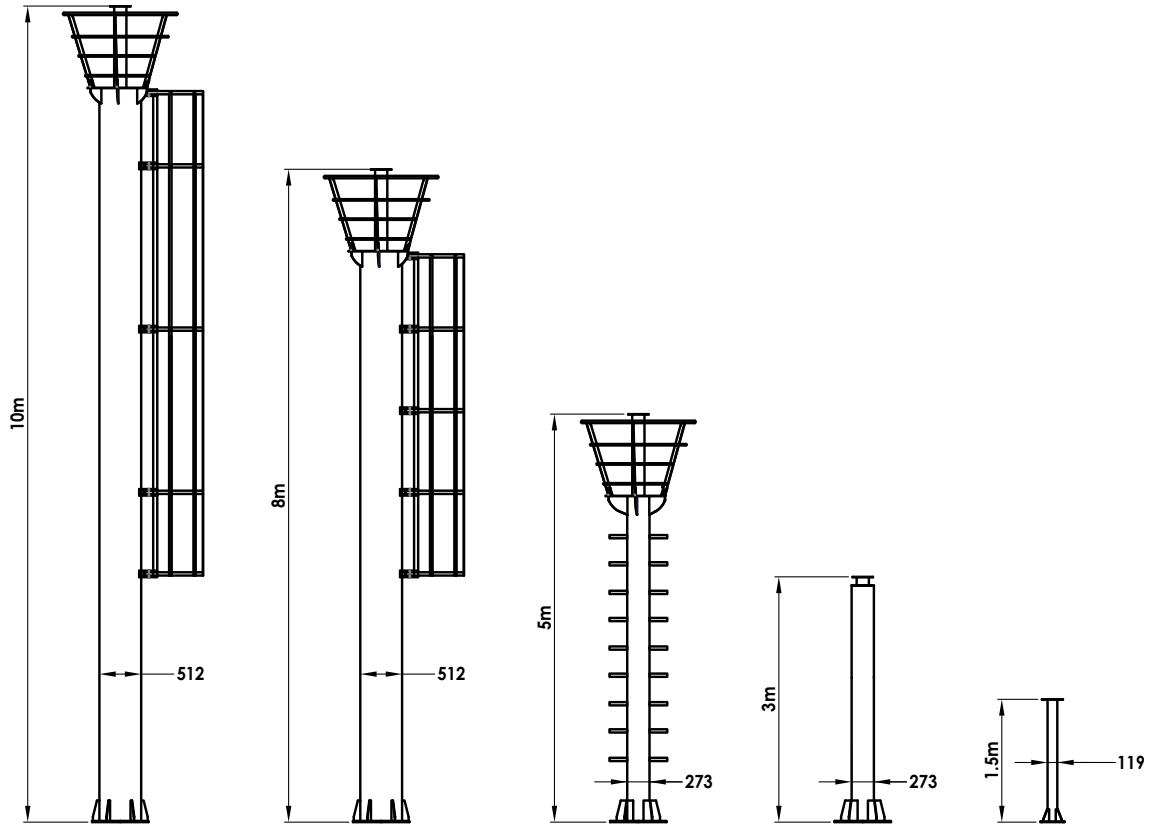
Poles can be completed with battery boxes and solar-module supports, according to the specific needs of every installation. Protection rings and top platform are provided depending on the pole height. They are designed according to IALA Recommendations.



FEATURES

- Made from hot-dip galvanised steel or stainless steel.
- Heights from 1.8 to 10 metres.
- Wind-speed resistances can be of up to 200 Kph.
- Painted with special marine paints.
- Top platform to hold solar modules and batteries, in poles higher than 5 metres.
- Access ladder with protection ring for poles higher than 5 metres.
- Stainless-steel bolts.
- Cable glands and plates to make electric cable conduction, if necessary.
- Restricted access to top platform with safety lock, for poles higher than 5 metres.
- Provided with templates for accurate anchor bolt positioning.
- Possibility of modular architecture for poles higher than 3 metres, as an option.

MPM



Options

- Solar module supports and battery box on top platform.
- Lightning protection system.
- Day marks.
- Radar reflector.
- Anti-falling protection with stainless-steel lifeline.
- Other heights and designs available.

MPM

MODEL	MATERIAL	FOCAL HEIGHT	TOP PLATFORM
MPM15	Galvanised steel / Stainless steel	1.8 m	Ø 30 cm
MPM30	Galvanised steel / Stainless steel	3.3 m	Ø 30 cm
MPM50	Galvanised steel / Stainless steel	5.3 m	Ø 800 cm
MPM80	Galvanised steel / Stainless steel	8.1 m	Ø 800 cm
MPM100	Galvanised steel / Stainless steel	10.4 m	Ø 800 cm

! Specifications subject to change without previous notice.