

GLOBAL SERVICE NETWORK HANLA IMS

- | | | | | |
|--|--|--|---|---|
| <p>SINGAPORE
 Aqua Logistics Pte. Ltd.
 Tel : +65 6566 5166
 Fax : +65 6566 6303
 Mail : aqualog@singnet.com.sg</p> | <p>JAPAN
 Daishin Technos Co., Ltd.
 Tel : +81 898 35 3331
 Fax : +81 898 24 2451
 Mail : eigyo@daishin-technos.co.jp</p> | <p>TAIWAN
 Laurel Gather Corp.
 Tel : +866 2 2232 9140
 Fax : +866 2 2923 1385
 Mail : captchen@lgc.tw</p> | <p>GREECE
 Franman Ltd.
 Tel : +30 210 9532350
 Fax : +30 210 9532355
 Mail : business1@franman.gr</p> | <p>TURKEY
 ISGEM
 Tel : +90 216 701 11 06
 Fax : +90 216 701 11 07
 Mail : sales@istanbulgasenergy.com
 info@istanbulgasenergy.com</p> |
| <p>SINGAPORE
 Raycontrol Pte. Ltd.
 Tel : +65 6563 0544
 Fax : +65 6560 0941
 Mail : sales@raycontrol.com</p> | <p>VIETNAM
 Cuong Vu Marine
 Tel : +84 24 3795 9260
 Fax : +84 24 3795 9261
 Mail : purchasing@cuongvumarine.com</p> | <p>MALAYSIA
 Sinco Automasi Sdn. Bhd.
 Tel : +607 2552 898
 Fax : +607 2555 898
 Mail : sales@sincoautomasi.com</p> | <p>THE NETHERLANDS
 ERIKS B.V.
 Tel : +31 10 284 1100
 Fax : +31 10 451 6851
 Mail : info.cappelle@eriks.nl</p> | <p>SPAIN
 Iberfluid Instruments S.A.
 Tel : +34 916 611 717
 Fax : +34 636 894 451
 Mail : marina@iberfluid.com</p> |
| <p>INDIA
 Arkay Electronics & Marine System Pvt.Ltd.
 Tel : +91 22 2558 5881
 Fax : +91 22 2558 5883
 Mail : aenms@vsnl.net</p> | <p>IRAN
 Shivasp
 Tel : +98 (21) 26600550
 Fax : +98 (21) 26600551
 Mail : marine@shivasp.net</p> | <p>U.A.E
 KDU World Wide Technical Services(FZC)
 Tel : +971 6 5578581 / 06 5575480
 Fax : +971 6 5578582 / 06 5575490
 Mail : p.chandan@kduworld.com</p> | <p>GERMANY
 Uniservice Germany Marine Products GmbH
 Tel : +47 2244 3153
 Fax : +47 2255 1931
 Mail : info@uniservice.as</p> | <p>GERMANY
 Arknoah Ship management GmbH
 Tel : +49 40 8195 2898
 Fax : +49 40 8195 2967
 Mail : info@arknoah</p> |
| <p>U.S.A
 STX Service Americas, LLC
 Tel : +1 713 934 0056
 Fax : +1 713 422 2344
 Mail : stx-parts-usa@onestx.com</p> | <p>PERU
 Navales SAC
 Tel : +51 1 421 7412
 Fax : +51 1 421 7466
 Mail : navales@navales.net</p> | <p>ITALY
 2M Technica S.R.L
 Tel : +39 045 6350393
 Fax : +39 045 6350389
 Mail : info@2mtechnica.it</p> | <p>POLAND
 Marcontrol
 Tel : +48 91 886 1 884
 Fax : +48 91 4 888 475
 Mail : office@marcontrol.com</p> | <p>POLAND
 Marine Technical Service Ltd.
 Tel : +48 918 524 818
 Fax : +48 918 865 942
 Mail : office@mts.szczecin.pl</p> |

HANLA IMS
 INSTRUMENT MONITORING SYSTEM

VALVE REMOTE CONTROL SYSTEM

VALVE REMOTE CONTROL SYSTEM

HANLA IMS KOREA
HEAD OFFICE (HANLA IMS CO.,LTD)
 115, Hwajeonsandan 1(il-ro, Gangseo-gu, Busan, Korea
 Tel: +82 51 601 7000 Fax: +82 51 831 1850
 E-mail : hanla@hanlaims.com www.hanlaims.com

2ND FACTORY
 1921-4, Beombang-dong, Gangseo-gu, Busan, Korea

LED FACTORY

HANLA IMS CHINA
CHINA CORPORATION (HANLA M&E CO.,LTD)
Sales Office
 Rm 711, Ouyin Buidling, No.1369 Wuzhong Road, Shanghai, China
 Tel: +86 21 5484 3251 Fax: +86 21 5484 3702
 E-mail : sales@hanlachina.com.cn www.hanlaims.com

Factory
 Nanyuan Rd. South Area of Economic Development Zone, Zhangjiagang, Jiangsu, China
 Tel: +86 512 5879 7601 Fax: +86 512 5879 7602
 E-mail : hanla@hanlachina.com.cn www.hanlaims.com

HANLA IMS FRANCE
FRANCE BRANCH (HANLA IMS EUROPE)
 Tel: +33 1 8345 3241 Fax: +33 6 8617 1247
 E-mail : garcia@hanlaims.com www.hanlaims.com



Greetings / Company History

Our company was established in 1989 specialized in the production of the level measuring instrument with the people oriented business philosophy while leading the technology. As a result, the company was listed in KOSDAQ under the company name "HANLA Level Co., Ltd. in 2007. In Oct. 2009, the company name was changed to HANLA IMS Co., Ltd. and now we are pushing forward with another new take-off through the expansion of the business area.

The company name was changed to HANLA IMS (Instrumentation Machinery System) Co., Ltd. to cover every business area to be diversified to Loading Computer, Valve Remote Control System, Deck Machinery, LED Lighting, Ballast Water Treatment System (BWTS), etc. from the measuring instrument business which is the company's existing business area, so we are determined to keep growing up as a company to be specialized in the integrate system in the field of shipbuilding and marine engineering, onshore plant and eco-friendly industry.

The business diversified to be developed for the company specialized in integrate system is now showing the increase in the sales every year thanks to our customers' encouragement and further BWTS will unveil the best quality product with better quality and price having the conveniences in installation and operation by improving the problems that other companies encountered in the existing market. Moreover, we are always doing our utmost for customer satisfaction since we have set up the factory in China to have the basis to be a global company.

We are committed ourselves to pulling out all the stops to be a company giving our customers the full satisfaction and reliability and contributing to the global society through the continuous challenge and innovation and continuous technical development.

We sincerely appreciate your encouragement and interest.

CEO/HANLA IMS Co., Ltd.

" We will provide our customers with much more benefits from the integrate system. "

CEO, Seok jun Ji

CEO, Yeong Gu Kim



1980

- 1989
- Established company

1990

- 1997
- ISO 9001 certified from DNV
- Representative agreement with kamstrup & klay : pressure & temperature instrument
- 1996
- Representative agreement with CSI by in Holland : Engine room alarm & monitoring system
- 1995
- Registered on manufacturer list of Korea Electric Power corporation about instrumentations : Nuclear electric power plant (T and S quality class)
- Technical license with Tokyo Keiso Japan : Level Instrument

- 1994
- Registered on manufacturer list of Korea Electric Power corporation for instrumentations : Thermal electric power plant (R quality class)
- Products type approved from : ABS, KR, LR, DNV, BV, GL, NK, RINA, etc
- Level instrumentations
- 1993
- Representative agreement with VEGA Germany : Level instrumentations
- 1992
- Technical agreement with Auxitrol France : Air purge type level gauging system
- Rader beam type level gauging system

2000

- 2005
- Awarded an export prize.(10,000,000 usd)
- Q-gold mark certified from Samsung Heavy Industries
- 2004
- Awarded an export prize(5,000,000 usd)
- 2002
- Established a joint-venture company in China : "TAIZHOU HANVI INSTRUMENT Co., Ltd
- 2000
- Moved into new factory in national industrial complex : Land 3,300m² / Floor space 3,200m²
- CE mark certified from DNV

- 2009
- Acquired equity in Blue Science Co.,Ltd
- Changed Name to HANLA IMS(November)
- Started business of Deck Machinery
- 2008
- Started business of Valve Remote Control
- Established an affiliated company of HANLA NMT
- 2007
- Established branch factory in China
- Listed in Korean Stock Market (KOSDAQ)

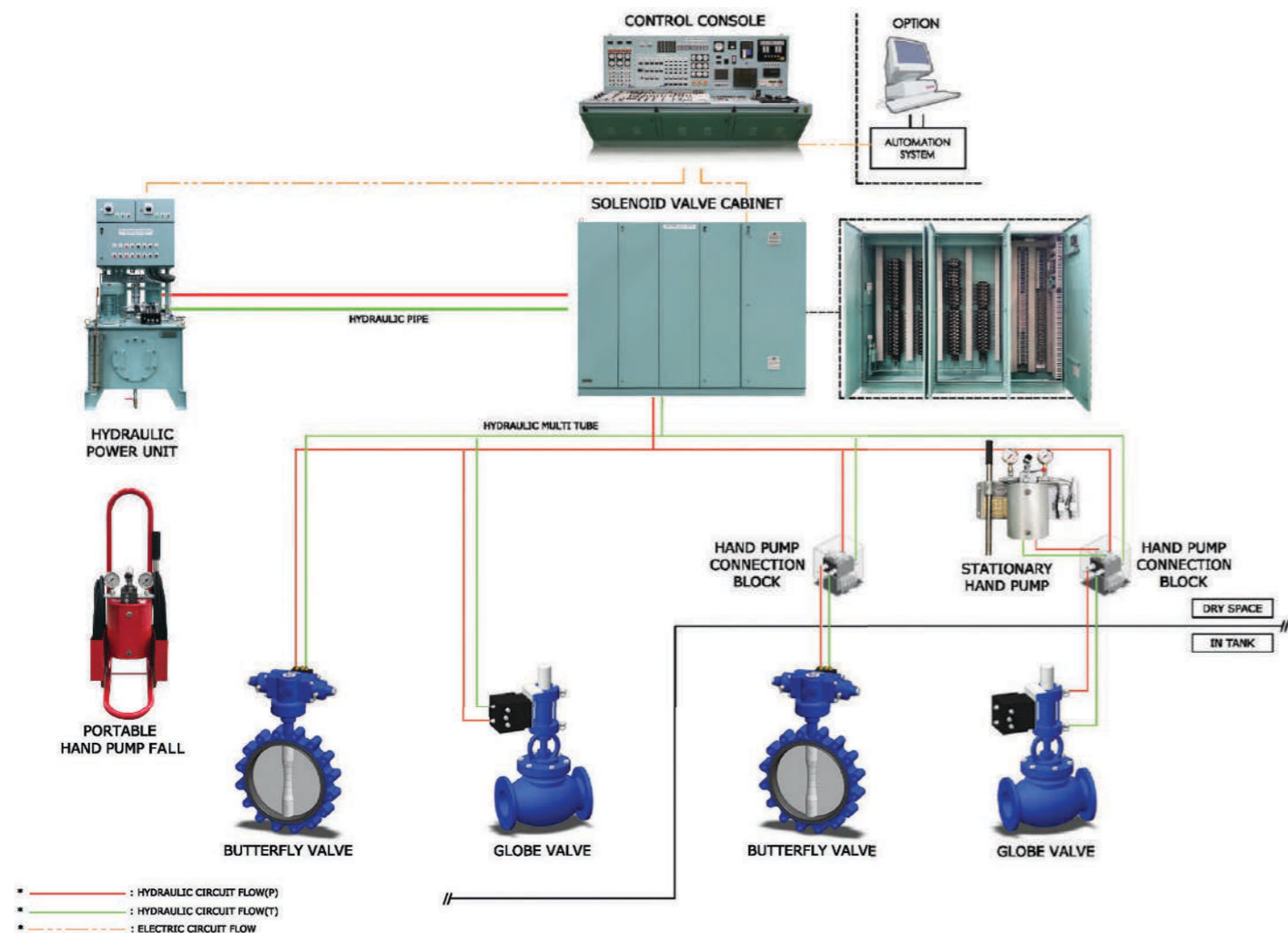
2010

- 2019
- USCG Type Approval Status : Under Review
- 2016
- Best Family Friendly Company Certification
- USCG AMS Approval of Ballast Water Treatment System
- 2015
- New Excellent Technology Authentication
- High technology product confirmation
- 'World Class 300 Company' Certificate of Designation
- Next Global Champ Certificate of Designation
- Type Approval Certificate of Ballast Water Treatment System
- 2014
- Korean World-class Product Award 2014 by Minister of Trade, Industry & Energy Republic of Korea
- 2013
- Concluded OEM Agreement with ECONOSTO
- 2012
- Designated Global Small Giants 2012 Leading Employer Award (Busan Metropolitan City)
- 2011
- ISO 14001 Certified to EMS and QMS
- 2010
- Declared Vision HI 1520 LED Lighting certified by KS Mark

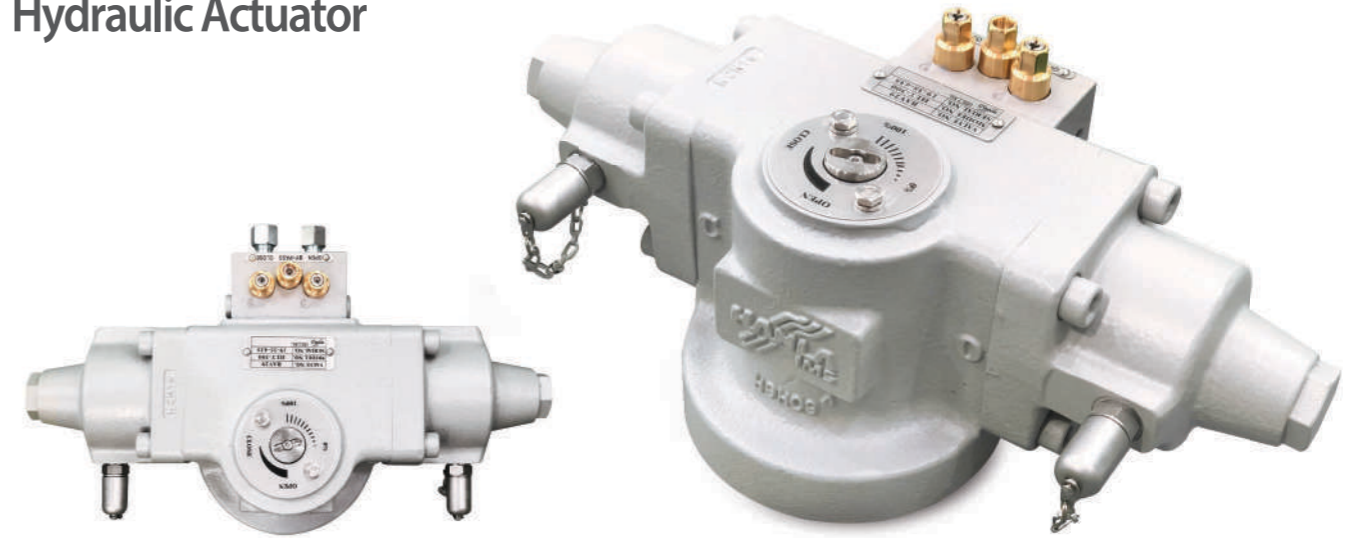
VALVE REMOTE CONTROL SYSTEM

"VALVE REMOTE CONTROL SYSTEM" manufactured by HANLA IMS are designed according to shipyard specification, client's requirements and rule requirement of classification society. Our system division in HANLA IMS make an effort to supply the best valve remote control system at a reasonable price.

System Overview



Hydraulic Actuator



HANLA IMS hydraulic actuators type HLT-series are especially designed for the operation of quarter turn valves such as butterfly valve, plug valve and ball valves. HLT-Series hydraulic actuators are available in a range of up to 12,800 N.m at maximum working pressure (16MPa – 160 bar).

HLT-Series hydraulic actuators can be operated by stationary hand pump, portable hand pump or manual hydraulic transmitter via quick connectors or fitted pipes.

In addition, HLT-Series hydraulic actuators are applied to any place, even submerged, dry space, on deck and in hazardous area. HLT-Series hydraulic actuators provide constant output torque over the complete quarter-turn.

Features

- Rack & Pinion type design
- Adjusting range : 90°±5
- Local visual indicator
- Manual override available
- Limit switch box available
- Design base for valve connection : ISO 5211
- Easy maintenance & Assembly works
- Accurate and reliable operation
- Max. design working pressure: 16Mpa(160bar)
- Reliable, long life performance (Tested by BS EN 15714-4:2009)

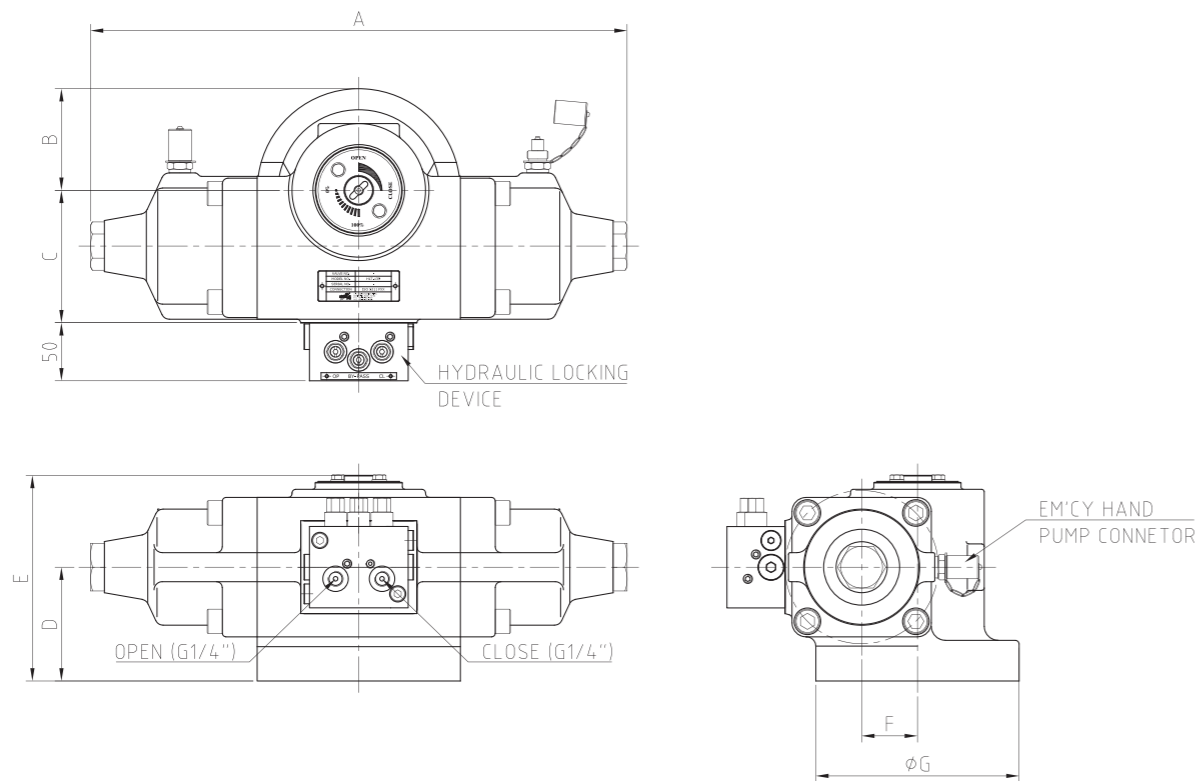


Model	Max. output torque -N.m (kgf.m)	Max. working press.- MPa (bar)	Adjustment angle	Cylinder volume capacity (cc)	Mounting flange (ISO 5211)
HLT-13	215.4 (22)	160 (16)	90°±5	28.5	F05, F07
HLT-35	586.1 (59.8)			62	F07, F10
HLT-70	1097.2 (112)			115	F10, F12
HLT-135	2110 (215.2)			223	F12, F14
HLT-300	4747.5 (484.4)			499	F14, F16
HLT-500	8510.4 (868.3)			895	F16, F25
HLT-800	12821.3 (1308.2)			1350	F25, F30

Hydraulic Actuator



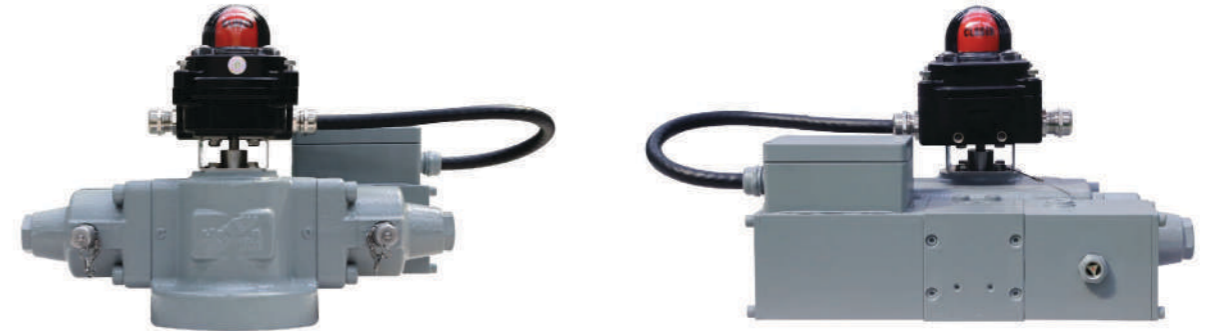
Dimension & Weight



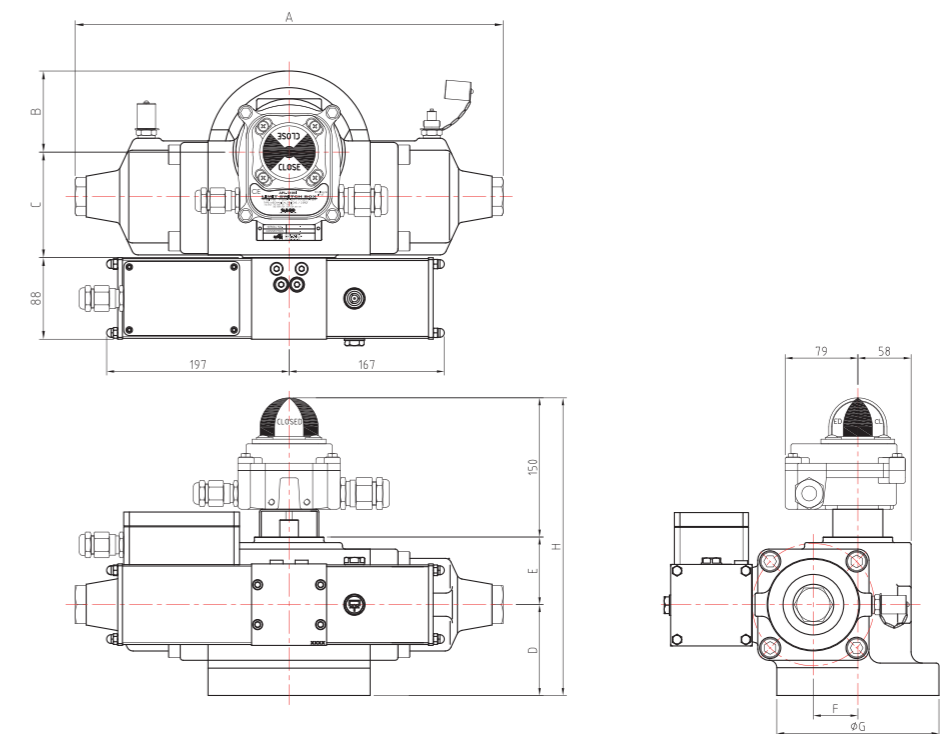
Model	A (mm)	B (mm)	C (mm)	D (mm)	E (mm)	F (mm)	G (mm)	Weight (kg)
HLT-13	286	52.5	67	60	110	22	105	15
HLT-35	329	62.5	79.5	68	124	30	125	20
HLT-70	400	75	91	80	143	37	150	31
HLT-135	462	87.5	114	98	177	48	175	41
HLT-300	598	105	144	112	200	69	210	81
HLT-500	792	150	174	130	237	84	300	140
HLT-800	867	175	207	155	273	100	350	204

Electro-Hydraulic Actuator

Electro-hydraulic actuator (EHLT-Series) consists of hydraulic actuator for operating valves, limit switch box for receiving single feedback, and micro power unit for supplying oil pressure. Micro power unit consists of electric motor with junction box, oil tank, and main block. Main block consists of relief valve and pilot check valve. Hydraulic pump connects with main block at the inside of oil tank. Normal and ex-proof type are available for electric motor. It is made of aluminum for body in addition to main block. IP68 of Electro-hydraulic actuator is available for double acting type.



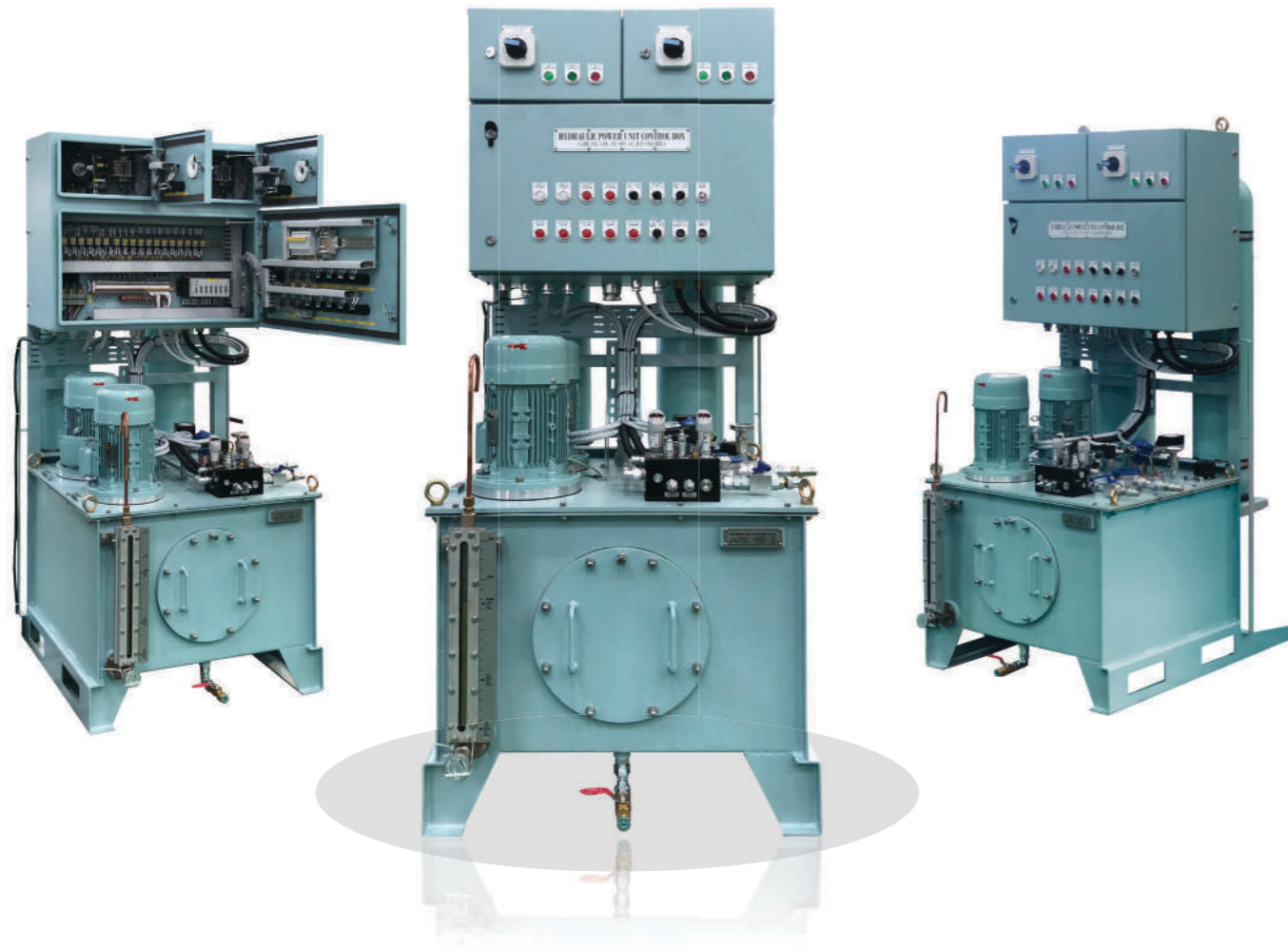
Dimension & Weight



Model	A (mm)	B (mm)	C (mm)	D (mm)	E (mm)	F (mm)	G (mm)	H (mm)	Weight (kg)
EHLT-13	286	52.5	67	60	45	22	105	225	17
EHLT-35	329	62.5	79.5	68	50	30	125	268	22
EHLT-70	400	75	91	80	57	37	150	287	32
EHLT-135	462	87.5	114	98	73	48	175	321	43
EHLT-300	598	105	144	112	85	69	210	344	84
EHLT-500	792	150	174	130	101	84	300	381	142
EHLT-800	867	175	207	155	112	100	350	417	207

HYDRAULIC POWER UNIT VALVE REMOTE CONTROL SYSTEM

Hydraulic Power Unit



"Hydraulic power unit" consists of oil reservoir, hydraulic pumps, electric motors, control panel, electric & hydraulic component and accumulators etc. All components are selected to ensure high reliability and the requirements.

Hydraulic power unit is designed to simple arrangement, easy control and easy maintenance. Control box of hydraulic power unit can control the hydraulic pumps (Main/Stand-by) and pump selection and monitor the abnormal alarm as like pressure, level and temperature.

In order to keep the adequate capacity of the accumulator, the hydraulic power delivers the higher pressure than the designed working pressure of VRC system. But the working pressure of VRC system can be limited at the required working pressure by the function of the pressure reducing valve.

The accumulator has three main purposes ;

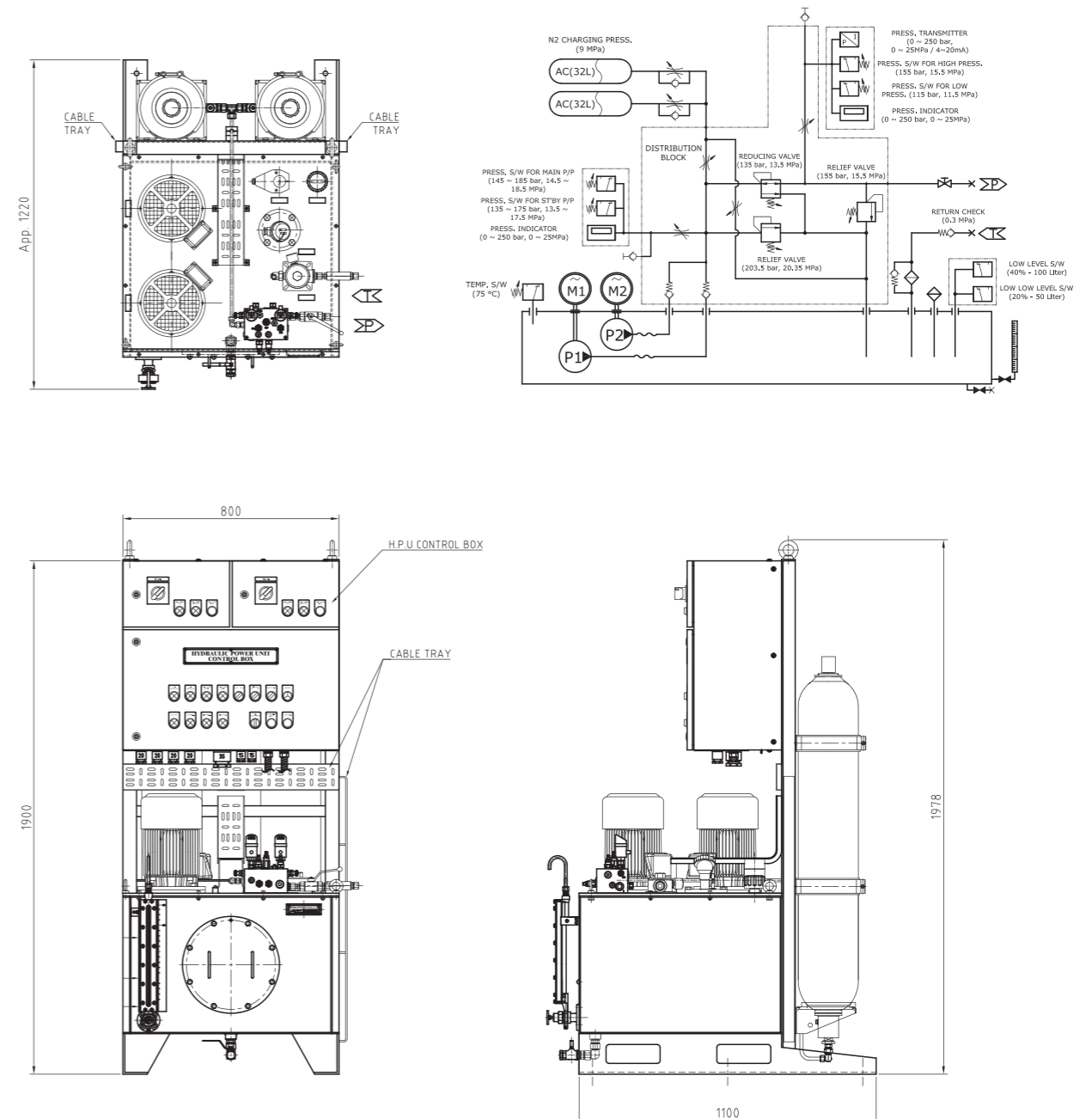
- Provide the reasonable time interval between start and stop of pumps by the compensation of the internal leakage in VRC system during the time given by the customized requirement.
- To secure and supply the constant hydraulic pressure
- To guarantee the complete operation of the specified valves which are clarified by the client's request under an emergency operation.

Features

- Simple design & arrangement
- Easy control & operation
- Easy Maintenance
- Constant hydraulic pressure

Components

- Hydraulic pump
- Electric motor
- Accumulator
- Pressure relief valve
- Pressure switch for control with pressure gauge
- Pressure switch for alarm with pressure gauge & transmitter
- Pressure reducing valve
- Level indicator
- Level switch
- Filter & indicator
- Temperature switch



Solenoid Valve Cabinet



"Solenoid valve cabinet" is divided into the hydraulic part and the electric part.

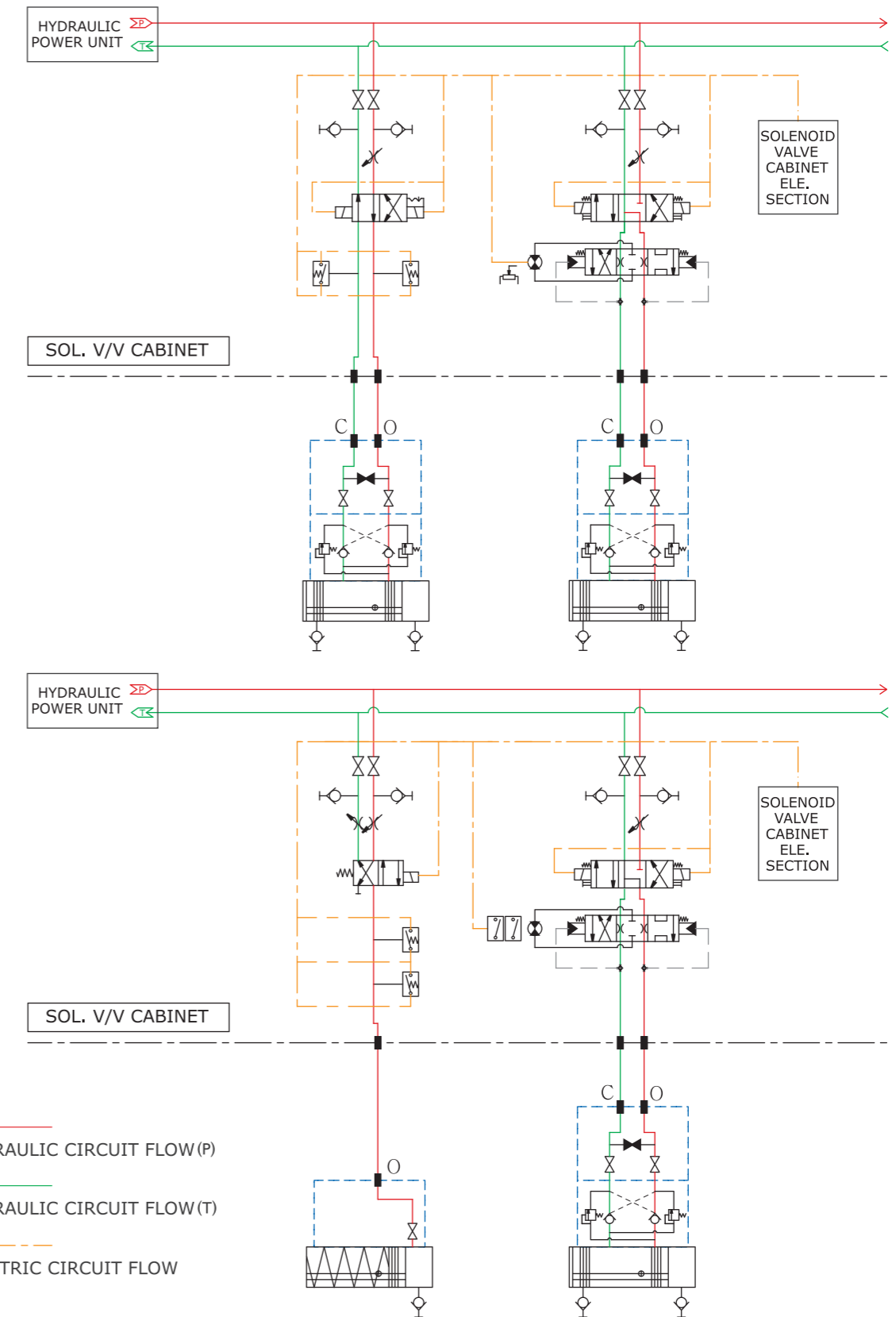
The hydraulic part consists of solenoid valves, flow control valves, manifold blocks, pressure filter and feed back components etc.

The electric part arranges to connect for electric wiring of valve control and feed back signal.

Solenoid valve cabinet controls in accordance with the function of each valve and it is an equipment to process its signal.

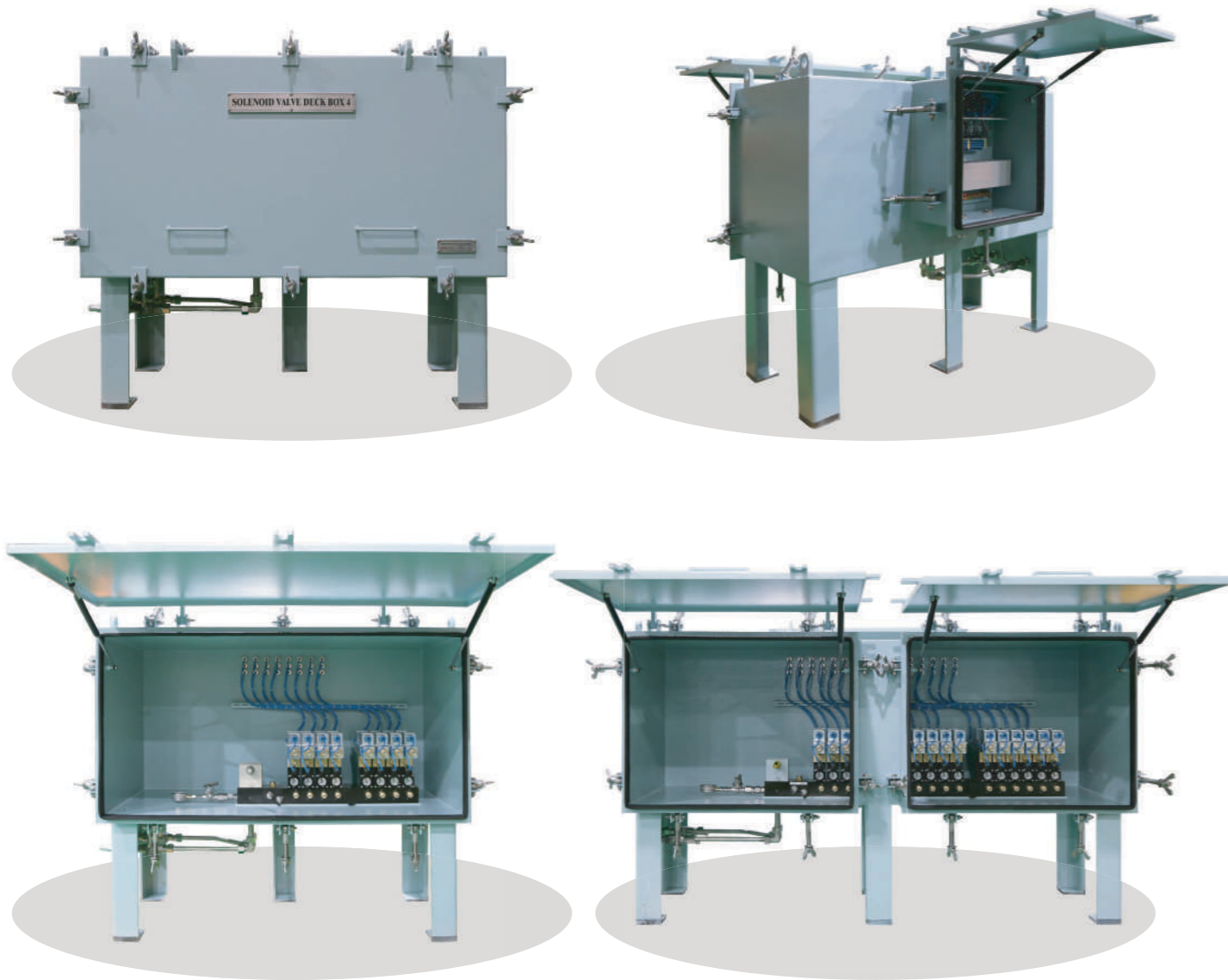
Through this equipment, it sends the valve position signal to control console or computer and receives the valve position signal, and controls each valve.

Schematic Diagram



Solenoid Valve Deck Box

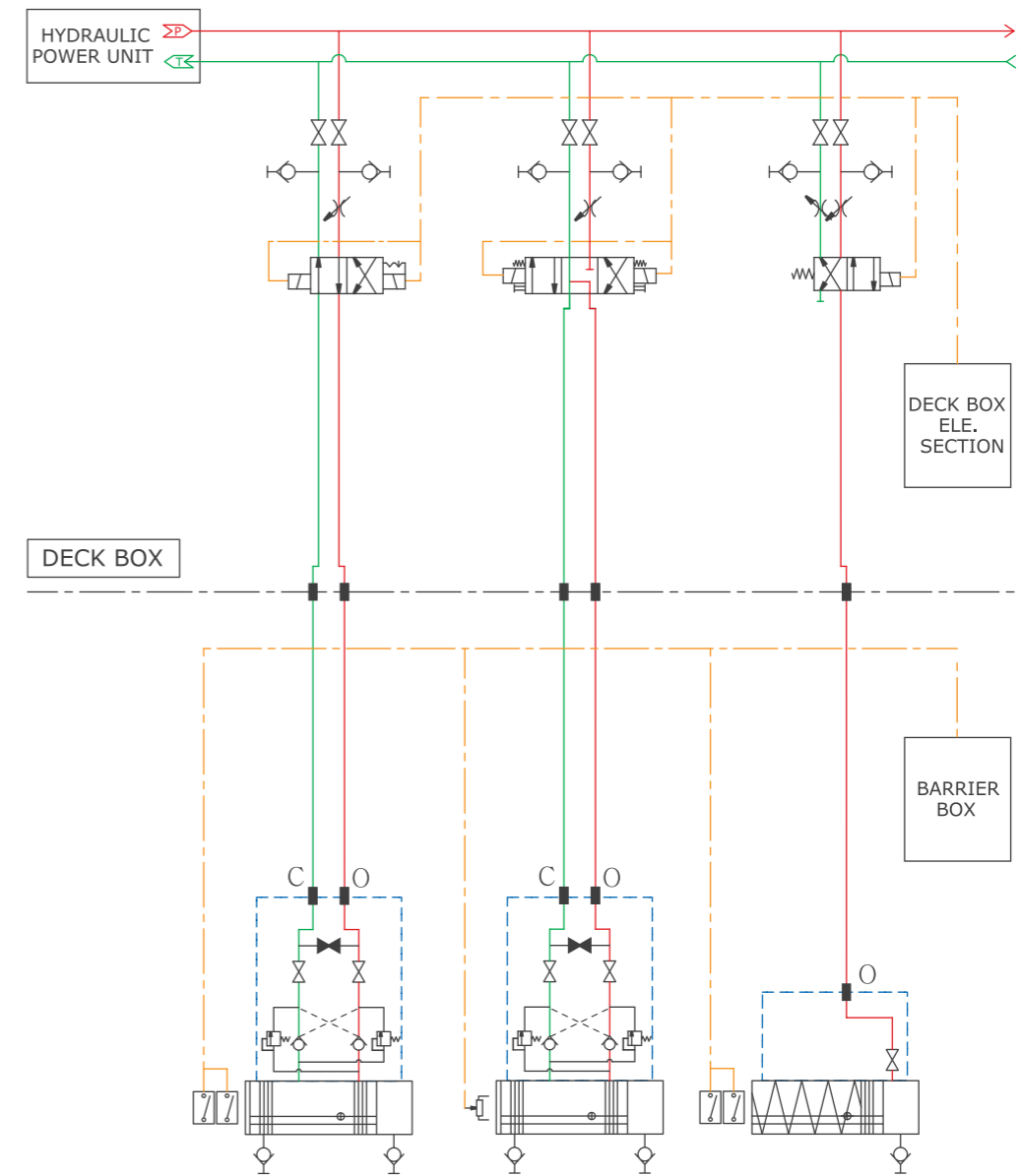
"Solenoid valve deck box" is installed in hazardous area on the deck of tanker vessel and constructed equipment to operate the valve and process the signal.



Components

- Steel cabinet (IP56 grade)
- Intrinsically safety solenoid valve (Ex ia Type)
- Manifold block
- Flow control valve
- Feed back unit(Flow meter or Pressure switch)
- Pressure filter unit
- Junction box
- Stop valve etc.

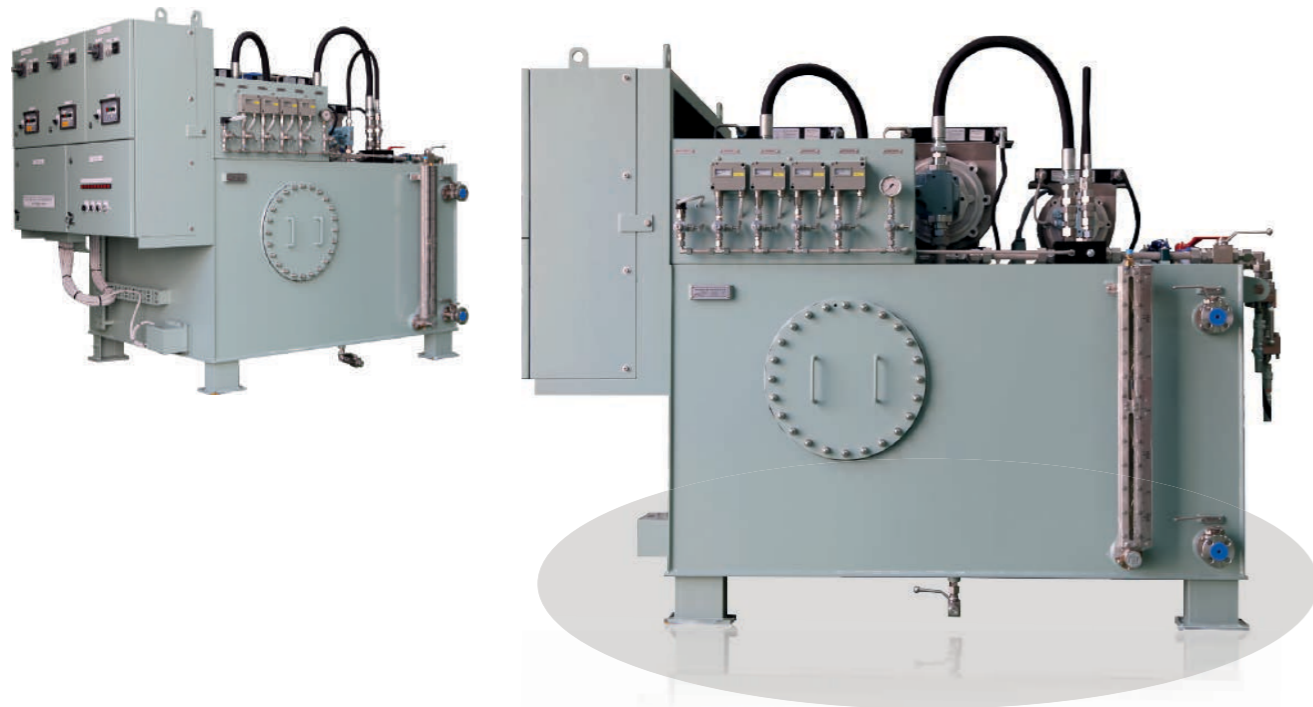
Schematic Diagram



- * ————— : HYDRAULIC CIRCUIT FLOW (P)
- * ————— : HYDRAULIC CIRCUIT FLOW (T)
- * - - - - - : ELECTRIC CIRCUIT FLOW

LNG CARRIER

Hydraulic Power Unit



The hydraulic power unit for LNG Carrier consists of two main hydraulic pumps/motors, one hydraulic topping up pump/motor, filters, gauges, electric & hydraulic components, control panels, and so on. There are two main pumps: one is for normal operation; another one is for back up operation. When the standard pressure level is under abnormal condition, the standby pump automatically runs in order to maintain the normal pressure level. The hydraulic topping up pump is designed to preserve the whole system pressure level when no valve is under operation.

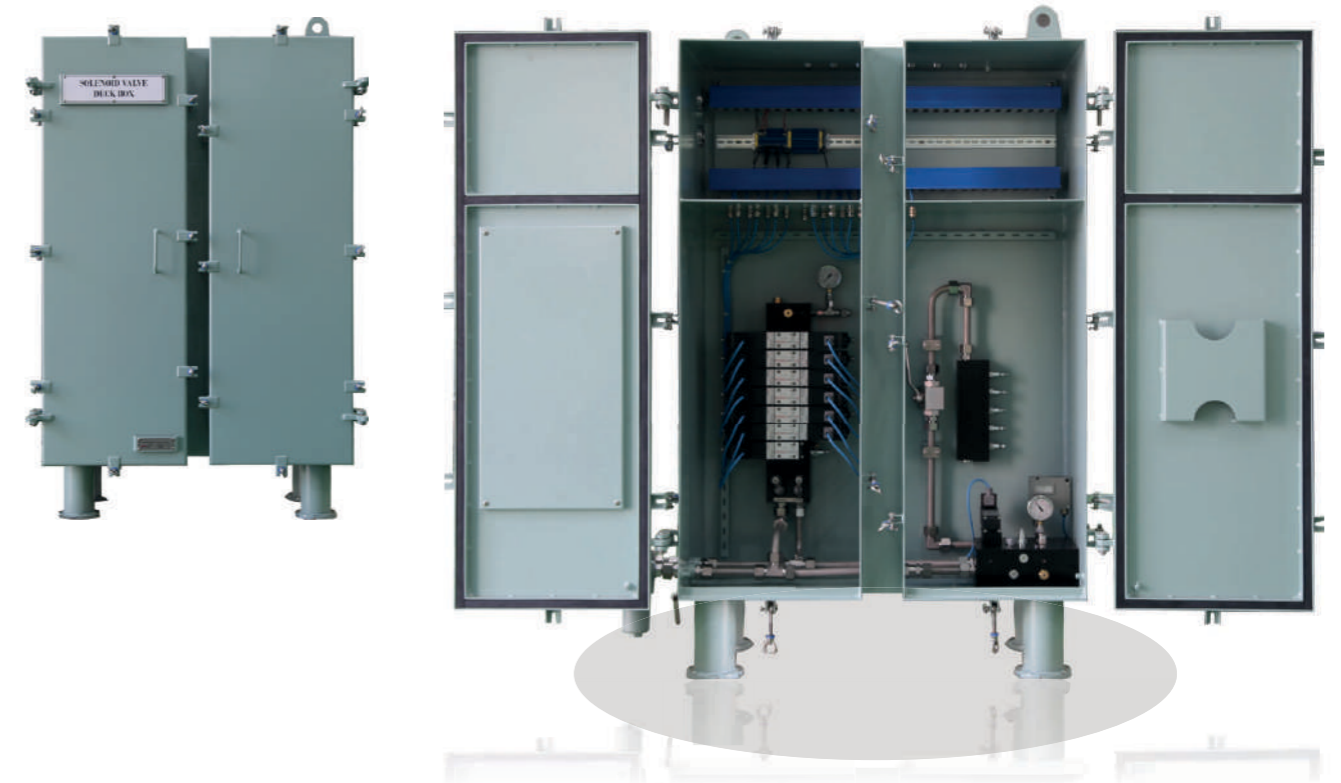
Normally, the hydraulic power units of LNG uses 'piston type pumps' & 'self-regulating type pumps' which keep the hydraulic pressure the standard condition. It supplies the constant pressure in the circuit when the pump runs.

Components

- Electric motor / Hydraulic pump
- Filters
- Pressure switch & Transmitter
- Level switch & Level indicator
- Pressure relief valve
- Temperature switch
- Accumulator
- Fitting & Valve, Gauge part
- Control panel for H.P.U



Solenoid Valve Cabinet



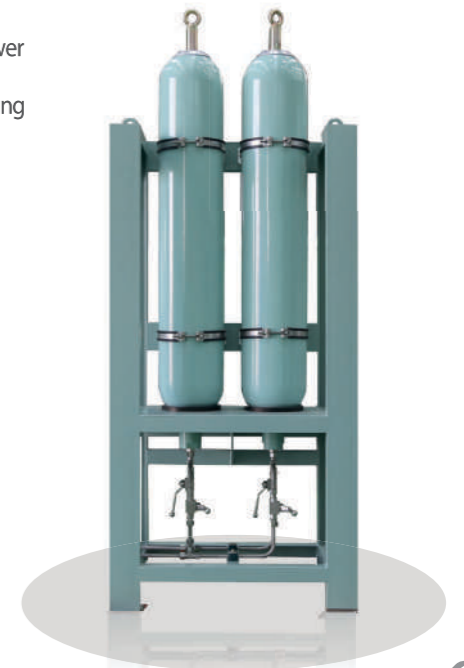
'Solenoid valve deck box for Emergency Shut Down (ESD) system' or 'Solenoid valve deck box' is installed in the passage way or the pump/ machinery room of the hazardous area for LNG carrier. It is constructed to operate the valve and to process the signal.

For the ESD system of valve operation, the ESD valves can be controlled the same as the other valves under the normal operating condition. When ESD solenoid valve is energized, it makes the oil way closed from ESD solenoid valve to closing chamber of the corresponding actuators. When the ESD solenoid valve under ESD condition, however, is dis-energized, it makes the oil way opened from ESD solenoid valve to closing chamber of the corresponding actuator.

Consequently, ESD valves are automatically shut down at ESD condition. The hydraulic power for closing ESD valves at ESD condition is supplied from the hydraulic accumulators. Normally, the capacity of accumulators has the enough power in order to allow the corresponding ESD valves work 2 strokes.

Components

- Steel cabinet (IP56 grade)
- Intrinsically safety solenoid valve (Ex ia Type)
- Manifold block
- Pressure filter unit
- Stop valve
- Flow control valve
- ESD block with electric/hydraulic components
- Accumulators



Control console



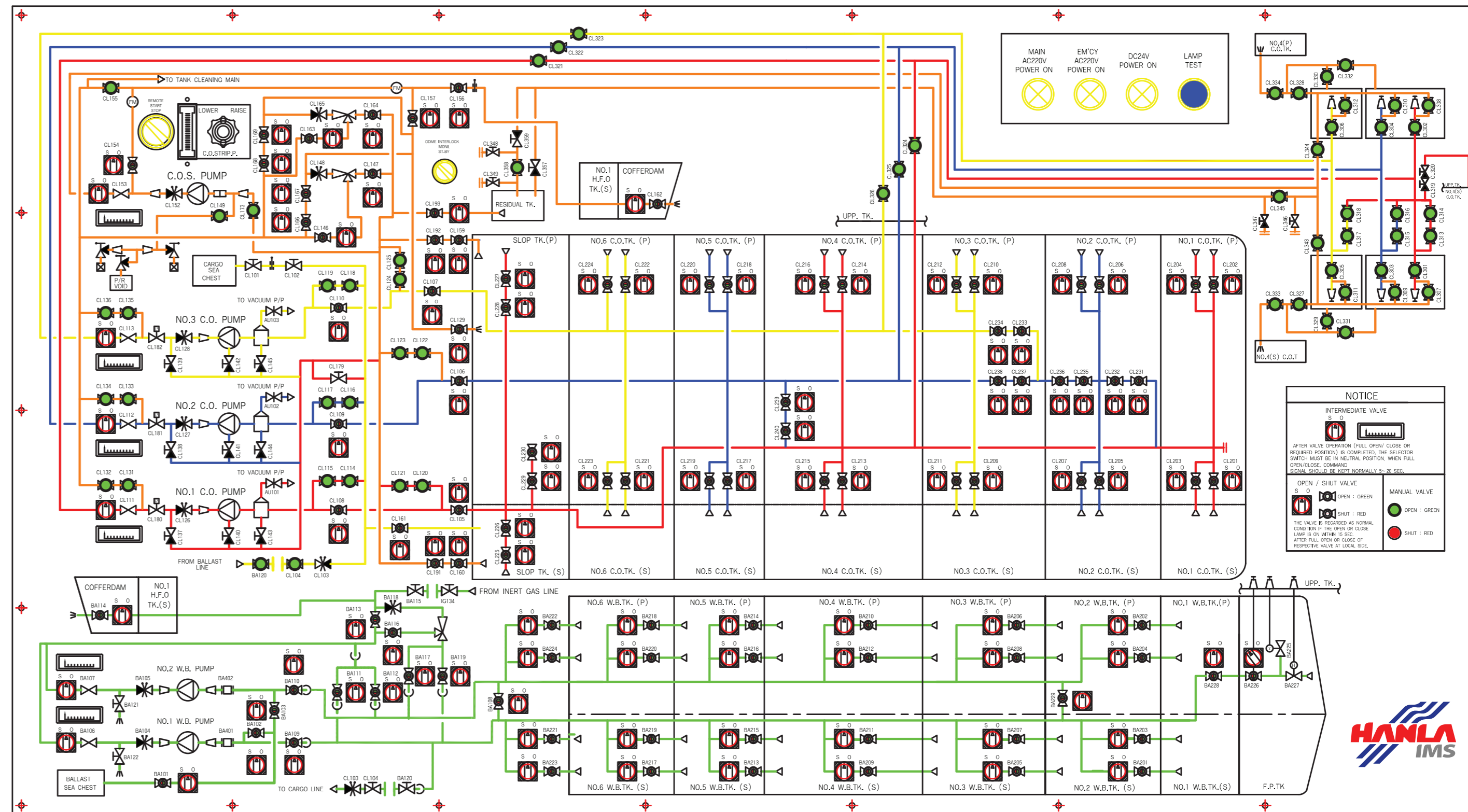
“Control console” operates and monitors the valve remote control system and position indication via switches and lamps installed on “Mimic” plate.
And control console monitors the tank level gauging system, cargo monitoring system and various related equipment.
And it's possible to organize the equipment by shipyard's request optionally.

Components

- Steel Structure
- Mimic board with valve control switch & indication device
- HPU remote control panel
- Electric power distribution
- Gauge part (Pressure, Tank level etc.)
- Others (Telephone, clock and Monitor etc.)



Mimic Diagram





*Note: Mimic diagram is inside. Pls. open this page

19

HANLA IMS
Valve Remote Control System
& Dynamic AI(AICMS)

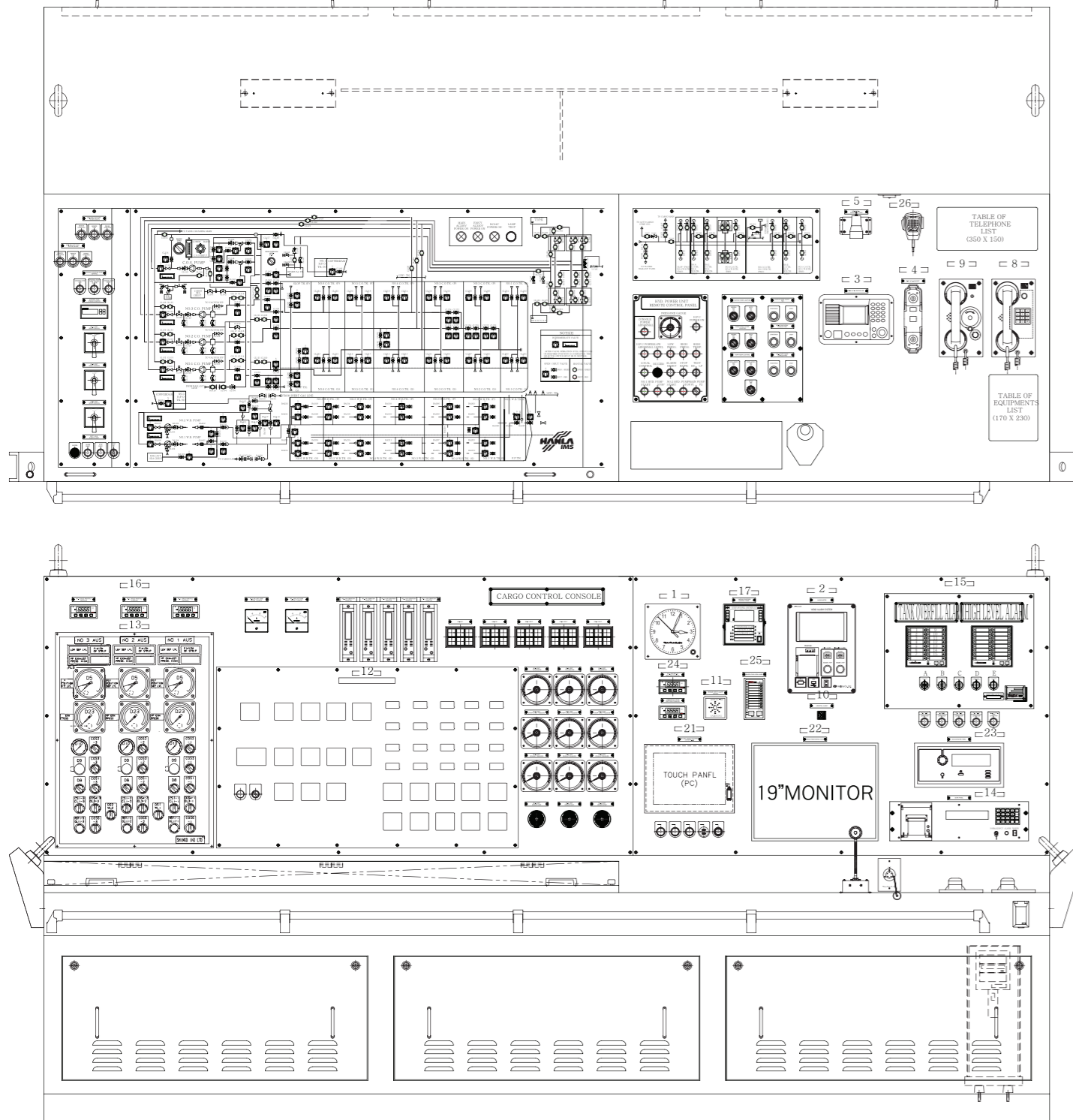
ACCESSORIES

VALVE REMOTE CONTROL SYSTEM

21

HANLA IMS
Valve Remote Control System
& Dynamic AI(AICMS)

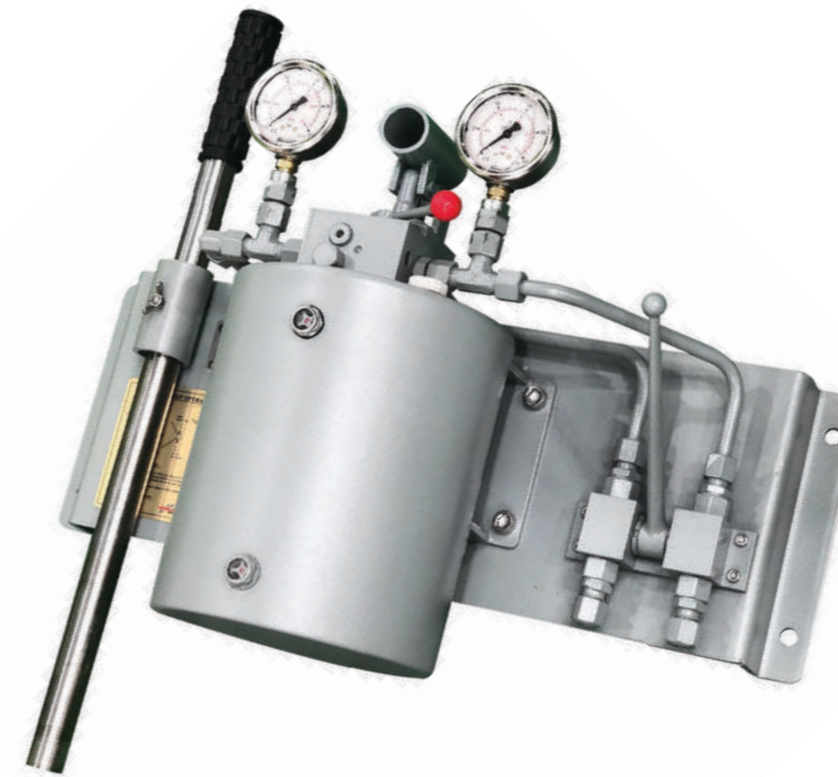
Outline Drawing



Emergency Operation Unit – Stationary Hand Pump

“Stationary hand pump” is supplied according to classification and specification. Therefore it can be supplied with protection box and the function can be added according to valve operation specification.

- Components**
- Hand pump unit with Stainless steel tank
 - Pressure gauge
 - Hand lever
 - Valve part
 - Optional – Protection box
 - Dual/Multi valve control
 - Indication
 - Operation method (Single acting)



Emergency Operation Unit – Portable Hand Pump

“Portable hand pump” is used in case of emergency and when HPU is inoperable. And it is useful when the operation of actuator is required (when maintenance of actuator or valve).

- Features**
- Easy to move and carry with wheels
 - Easy to tidy up the hose
 - Excellent performance

- Components**
- Hand pump unit with Stainless steel tank
 - 5m X 2 Flexible hose with self sealing coupling
 - Pressure gauge (0~250bar)
 - Steel frame with wheels

Emergency Operation Unit – Hand Pump Connection Block

“Hand pump connection block” is the equipment to operate the remote valve which is installed in the cargo & ballast tank or inaccessible area, using the hand pump in case of emergency. It is generally installed in the dry space of easy accessible area or on deck.

- Components**
- Emergency hand pump block
 - Emergency hand pump connectors
 - Stop valve
 - Seat with protection cover for welding



Flow Meter

“Flow meter” can read out the oil flow when operating each actuator and is a device to detect about open and shut of valve.

Type

- Standard**
- Electric type (Output : 4~20mA)
 - Electric type (Output : Dry contact)

Option

- Mechanical type (Output : 0~1 KΩ)
- Mechanical type (Output : Dry contact)

Components

- Main body
- Main gear part
- Temperature & Pressure compensation block
- Indication part (Electric or Mechanical type)



Limit Switch Box

“Limit switch box” is installed to actuator directly. This device can receive the signal on actuator operation and deliver the position of valve.

Features

- Dry contact (2XSPDT)
- Potentiometer (Output : 0~1KΩ)
- Output 4~20mA

Components

- It's actuator and limit switch box all in one for prevention of inflow of foreign substance
- Made with strong material on sea water (Material : Ductile cast iron - FCD450)
- Accessory is installable (Special recognition equipment such as flag Indicator etc.)
- Durable device





Safety Block with Isolating Valve Block

Features & Composition

- The double pilot check valve makes the last position of actuator kept when hydraulic pressure stopped.
- Two relief valves drain hydraulic oil in actuator cylinder when setting pressure exceed.
- Two isolating valves cut off hydraulic oil to hydraulic actuator.
- The by-pass valve by-passes the hydraulic oil to flush the hydraulic line.

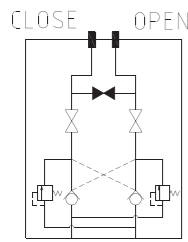
Specification

- Max. working pressure : 160 bar (16 Mpa)
- Hydraulic connection thread : G1/4"
- Relief cracking pressure : 180 bar (18 Mpa)
- Temperature range : -25°C ~ +100°C
(If need other temperature range, consult us)
- 30 liter/min. at 120 bar (12Mpa)
- Weight : 3 Kg

Material

- Block : FCD400 (With electric coating for corrosion free marine service)
- Seal : NBR (Nitrile Butadiene Rubber)
- Relief valves : SCM440 with heat treatment
- Check valve : SCM440 with heat treatment
- Valve body : BC6

Hydraulic schematic diagram



Isolating Valve Block

Features & Composition

- Two isolating valves cut off hydraulic oil to hydraulic actuator.
- The by-pass valve by-passes the hydraulic oil to flush the hydraulic line.

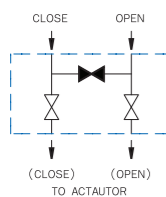
Specification

- Max. working pressure : 160 bar (16 Mpa)
- Hydraulic connection thread : G1/4"
- Temperature range : -25°C ~ +100°C
(If need other temperature range, consult us)
- 30 liter/min. at 120 bar (12Mpa)
- Weight : 3 Kg

Material

- Block : FCD400 (With electric coating for corrosion free marine service)
- Seal : NBR (Nitrile Butadiene Rubber)
- Valve body : BC6
- Nameplate : SUS316

Hydraulic schematic diagram



ESD Block

Features & Composition

- The ESD block consists of three pilot check valves and two relief valves.
- In the event of an emergency, actuator is operated (open/close) by auxiliary source such as accumulator through ESD block.

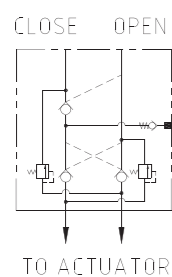
Specification

- Max. working pressure : 160 bar (16 Mpa)
- Relief cracking pressure : 180 bar (18 Mpa)
- Temperature range : -25°C ~ +100°C
(If need other temperature range, consult us)
- 30 liter/min. at 120 bar (12Mpa)
- Weight : 7 Kg
- Emergency connection thread : G1/2"

Material

- Block : FCD400 (With electric coating for corrosion free marine service)
- Seal : NBR (Nitrile Butadiene Rubber)
- Relief valves : SCM440 with heat treatment
- Pilot check valve : Steel

Hydraulic schematic diagram



Electric Actuator

HANLA IMS electric actuators type EQ-series are designed and invented for valve automation like ball valve, butterfly valve, plug and even dampers. Small, light and compact design, high torque and various control option meet all demands.

Features

- Manual hand wheel
- 4 Limit switches as standard (2 for operation and 2 for extra)
- Captive cover bolt
- Space heater
- Terminal block (11P)
- Mounting connection flange : ISO 5211
- Rechargeable battery backup actuator for emergency application

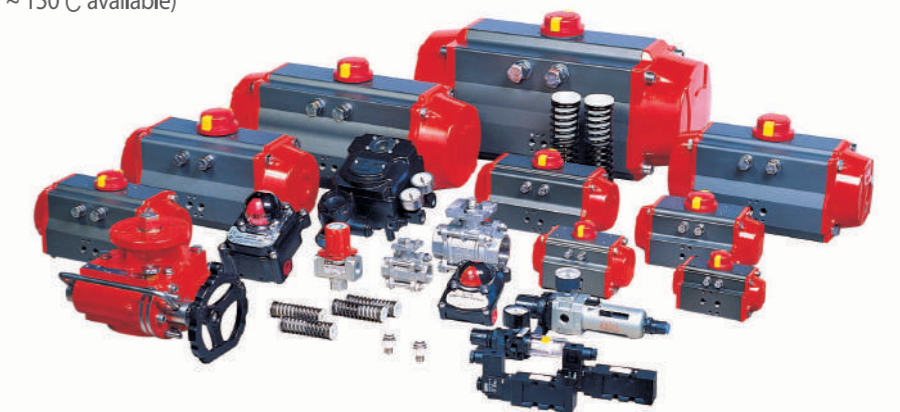


Pneumatic Actuator

HANLA IMS pneumatic actuators type HP series are compact, long-life and high quality and especially designed to meet the simple operation of quarter-turn valves. HP actuators provide a wide range of output torque for ball valve, butterfly valve, plug and damper valve.

Features

- Rack and pinion & Scotch yoke type design
- Double acting / Single acting (Spring return type)
- Connection flange : ISO 5211 / DIN 3337, VDI/VDE 3845, NAMUR
- Maximum working pressure 10 bar
- Temperature range : -20°C ~ 80°C as standard (-35°C ~ 150°C available)



Dynamic-A (Integrated Alarm Monitoring and Control System)

Dynamic-A is the product name of HANLA IMS integrated alarm monitoring and control system.

This system has been designed and developed in order to effectively operate the ship's engine room auxiliary machinery and cargo/ballast in HANLA IMS. Dynamic-A is an integrated alarm monitoring and control system that integrates remote operation of engine room auxiliary machinery based on computer workstation in the engine control room and remote operation of cargo and ballast based on computer workstation in the cargo control room.

The status of each equipment for remote operation of engine room auxiliary machinery and cargo machinery are graphically displayed on the mimic screen of the piping diagram of the computer workstation, and each displayed equipment can be controlled by the operator.

The system configuration has a modular design, and builds on workstation and I/O modules interconnected by Ethernet TCP/IP and CAN communication networks. This allows us to meet individual ship owner's requirements using standard modules. Different selections of these units are used to configure each individual system.

The I/O modules are possible to distributed arrangement, and the distributed I/O modules communications via a high speed CAN communication protocol. And the I/O modules may freely be adapted even under operation conditions.

The Dynamic-A includes the VRCS(valve remote control system) module, which remotely monitoring and controls various type of valves.

The VRCS typically consists of workstations installed in cargo control console and I/O modules for valve control installed in the local cabinet. They are interconnected through an Ethernet TCP/IP and CAN communications network.

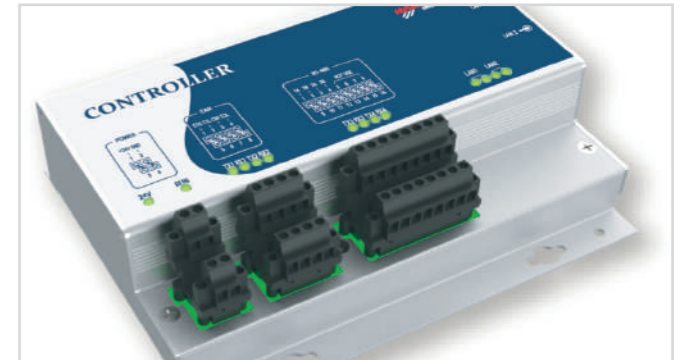
Features

- Open/shut valve control and position indication at locally and remotely
- Throttle valve control and position indication at locally and remotely
- HPU status and alarm monitoring
- HPU pump control
- HPU pump change over
- Various pump control
- Others

Components

- Workstation with operation keyboard
- Network switch
- UPS, if necessary
- Controller for gateway and control
- Combi-A module for throttle valve control, includes local/remote switch
- Combi-D module for open/shut valve control, includes local/remote switch
- AI-16 module for 16 channel analogue input
- AI-8RTD module for 8 channel RTD input
- AO-8 module for 8 channel analogue output
- DI-32 module for 32 channel digital input
- DO-16 module for 16 channel digital output

Dynamic-A has obtained type approval certificates for ABS, BV, CCS, DNV GL, KR, LR and NK classification



Controller	
Main Power	24VDC
Operation Voltage	18VDC to 36VDC
Operation Temperature	0°C to 70°C
Humidity	95%
Communication	2 x LAN, RJ-45, Ethernet TCP/IP 2 x CAN (2.0B Active), No. of nodes : Up to 120 modules
Dimension	2 x RS-485 160(H)x210(W)x60(D)mm



Combi-A and Combi-D	
Main Power	24VDC
Operation Voltage	18VDC to 36VDC
Operation Temperature	0°C to 70°C
Humidity	95%
Communication	1 x CAN (2.0B Active)
2 x Digital Input	Dry Contact
2 x Digital Output	Relay Contact, 230VAC/24VDC, 5A
1 x Analog Input	4~20mA
Analog Input Source	Internal Source or External Source
Dimension	108(H)x22.6(W)x116.6(D)mm

